



WAAS CH <b>82724</b> <b>W02A</b>	APP CRS <b>019°</b>	Rwy Idg <b>3270</b> TDZE <b>1789</b> Apt Elev <b>1789</b>
--	------------------------	---

# RNAV (GPS) RWY 2

## MARTIN CAMPBELL FLD (1A3)

RNP APCH - GPS.

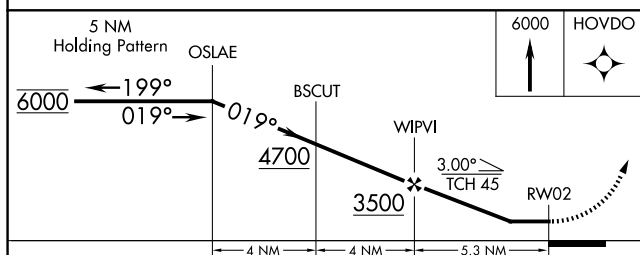
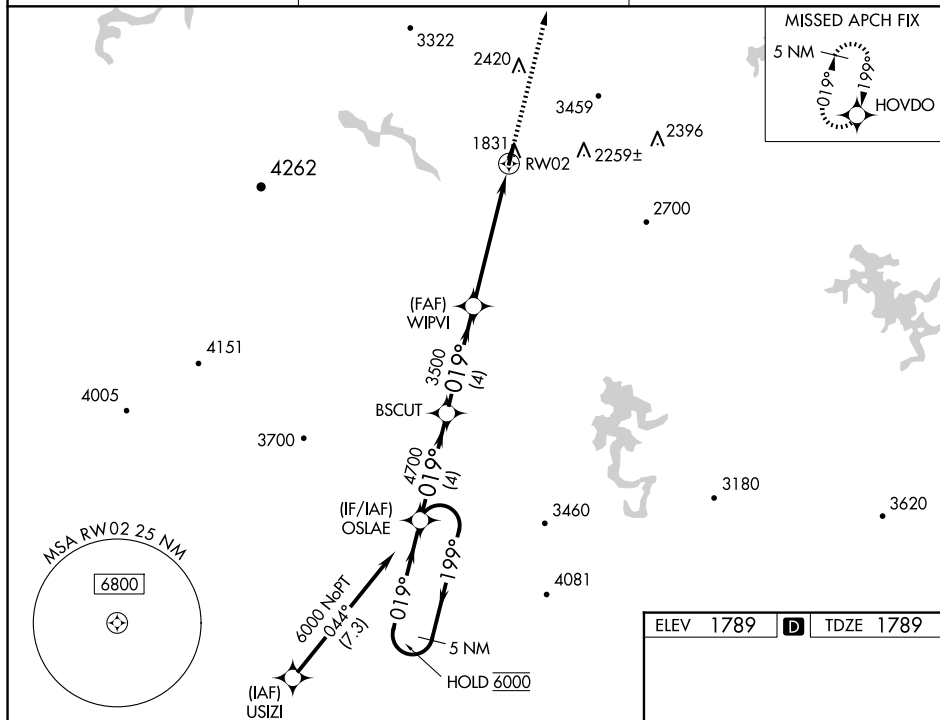
	Procedure NA at night. Rwy 2 helicopter visibility reduction below 1 SM NA.
 NA	Circling NA for Cat C east of Rwy 2-20. Use Andrews altimeter setting, when not received, use Dalton altimeter setting and increase all MDAs 160 feet, LNAV visibility Cat B/C ½ SM and LP visibility Cat B/C ⅔ SM.

**MISSED APPROACH:** Climb to 6000 direct HOVDO and hold, continue climb in hold to 6000.

RHP AWOS-3  
**119.675**

ATLANTA CENTER  
133.1 342.425

CTAF  
122.9 **L** ★



CATEGORY	A	B	C	D
LP MDA	2460-1	671 (700-1)	2460-1 $\frac{1}{8}$ 671 (700-1 $\frac{1}{8}$ )	NA
LNAV MDA	2500-1	711 (800-1)	2500-2 711 (800-2)	NA
CIRCLING	2900-1 $\frac{1}{4}$ 1111 (1200-1 $\frac{1}{4}$ )	3040-1 $\frac{1}{2}$ 1251 (1300-1 $\frac{1}{2}$ )	3080-3 1291 (1300-3)	NA

