

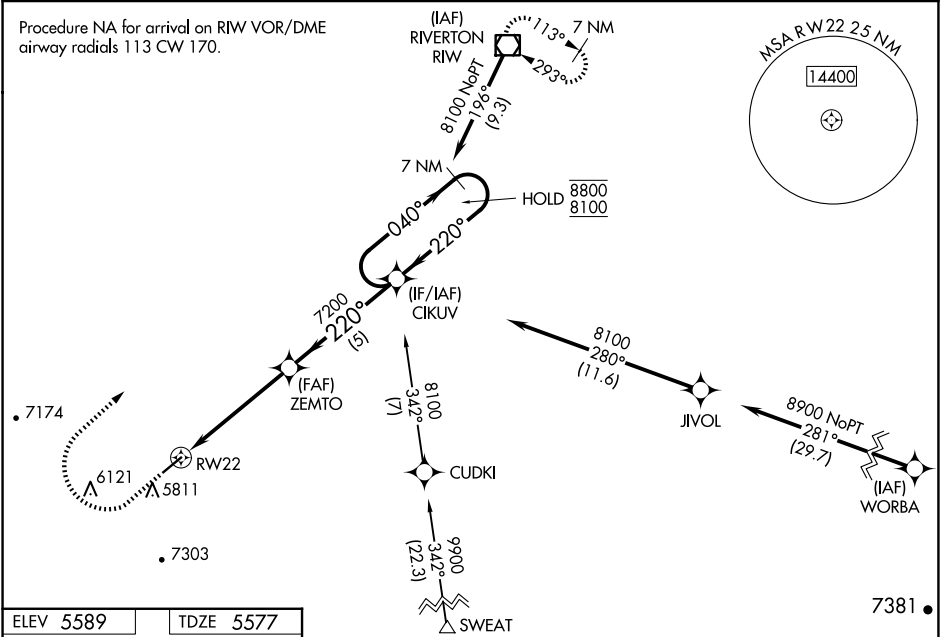
| | | |
|--|------------------------|---|
| WAAS CH 50343 W22A | APP CRS 220° | Rwy Idg TDZE 5577 Apt Elev 5589 |
|--|------------------------|---|

RNAV (GPS) RWY 22

HUNT FLD (LND)

| | |
|---|--|
| RNP APCH. ▼ Circling NA southeast of Rwy 4 and 22. Circling Rwy 4 NA at night. Rwy 22 helicopter visibility reduction below ¾ SM NA. For uncompensated Baro-VNAV systems, LNAV/VNAV NA below -26°C or above 54°C. ▲ | MISSED APPROACH: (Do not exceed 165K until R/W VOR/DME) Climb to 6280 then climbing right turn to 8200 direct R/W VOR/DME and hold. #Missed approach requires minimum climb of 355 feet per NM to 6700. |
|---|--|

| | | |
|-----------------------|---|---------------------------------|
| ASOS 118.15 | SALT LAKE CENTER 133.25 285.6 | UNICOM 122.8 (CTAF) 0 |
|-----------------------|---|---------------------------------|



220° to RWY 22

0.6% UP

5000 X 75

6280

↑

8200

↷

R/W

◻

*LNAV only

RWY 22

*2.9 NM to RWY 22

2.9 NM

ZEMTO

7200

CIKUV

7200

7 NM Holding Pattern

040° → 8800

← 220° 8100

GP 3.00°

TCH 41

| CATEGORY | A | | B | C | D |
|--------------|---------|--------------|-------------------------|---|----|
| LPV DA# | 5827-¾ | | 250 (300-¾) | | NA |
| LPV DA | 6060-1⅜ | | 483 (500-1⅜) | | NA |
| LNAV/VNAV DA | 6040-1⅜ | | 463 (500-1⅜) | | NA |
| LNAV MDA | 6460-1¼ | 883 (900-1¼) | 6460-2½ 883 (900-2½) | | NA |
| CIRCLING | 6460-1¼ | 871 (900-1¼) | 6540-3 951 (1000-3) | | NA |

REIL Rwy 4 and 22

MIRL Rwy 4-22