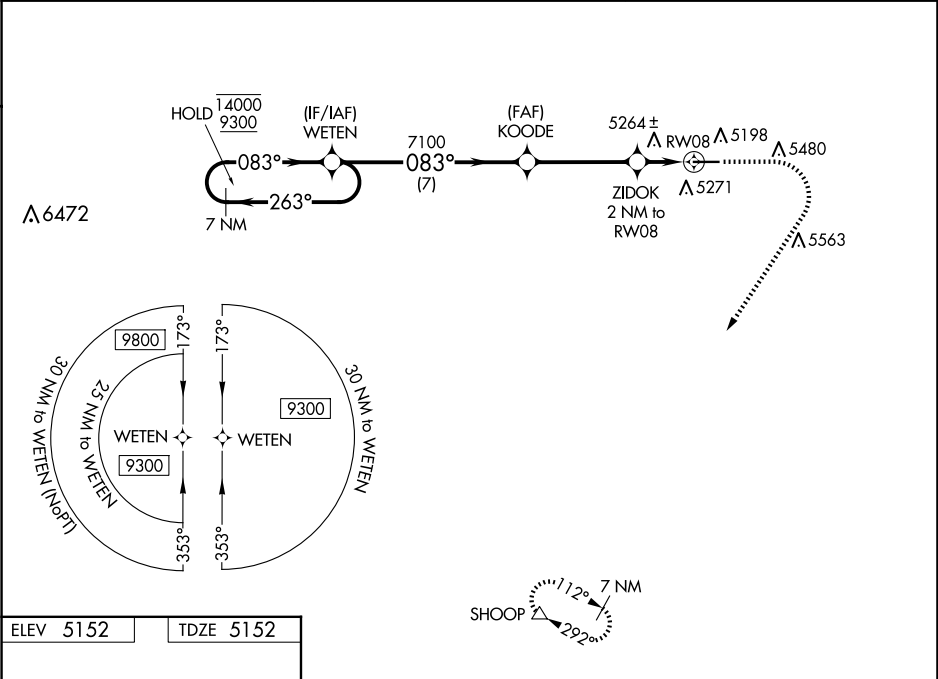


WAAS CH <b>69447</b> <b>W08A</b>	APP CRS <b>083°</b>	Rwy Ldg <b>5330</b> TDZE <b>5152</b> Apt Elev <b>5152</b>
--	------------------------	---

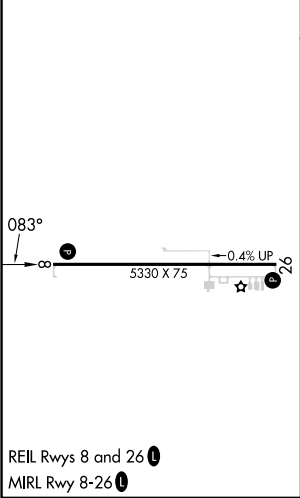
RNAV (GPS) RWY 8  
PINE BLUFFS MUNI (82V)

RNP APCH - GPS.	MISSED APPROACH: Climb to 5800 then climbing right turn to 9300 direct SHOOP and hold, continue climb-in-hold to 9300.
For uncompensated Baro-VNAV systems, LNAV/VNAV NA below -22°C or above 54°C. Procedure NA at night.	

AWOS-3PT <b>132.425</b>	DENVER CENTER <b>125.9 284.7</b>	UNICOM <b>122.8 (CTAF) 0</b>
----------------------------	-------------------------------------	---------------------------------



ELEV 5152	TDZE 5152
-----------	-----------



VGSI and RNAV glidepath not coincident (VGSI Angle 3.00/TCH 25).				
7 NM Holding Pattern				
WETEN				
KOOODE				
ZIDOK 2 NM to RW08				
RW08				
GP 3.00° TCH 40				
5330 X 75				
0.4% UP				
20°				
CATEGORY	A	B	C	D
LPV DA	5402-1	250 (300-1)		NA
LNAV/VNAV DA	5531-1	379 (400-1)		NA
LNAV MDA	5520-1	368 (400-1)		NA
CIRCLING	5620-1 468 (500-1)	5680-1 528 (600-1)	5780-1¾ 628 (700-1¾)	NA