

APP CRS
195°

| | |
|----------|-------------|
| Rwy Ldg | 3189 |
| TDZE | 539 |
| Apt Elev | 539 |

RNAV (GPS) RWY 19

SALUDA COUNTY (6J4)

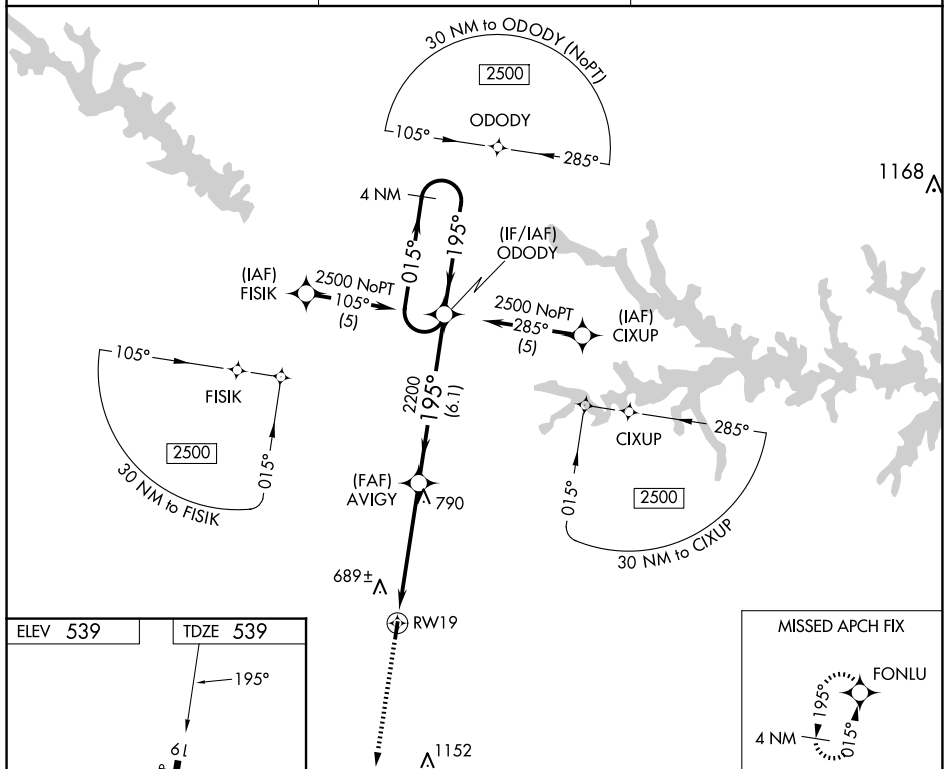


DME/DME RNP-0.3 NA. Procedure NA at night. Visibility reduction by helicopters NA. Use Aiken altimeter setting, when not received, use Augusta Rgnl altimeter setting and increase all MDAs 100 feet, increase LNAV Cat C visibility $\frac{1}{4}$ SM and Circling Cat C visibility $\frac{1}{2}$ SM.

MISSED APPROACH: Climb to 2500 direct FONLU and hold.

AIK AWOS-3PT
118.025

AUGUSTA APP CON ★
119.15

CTAF
122.9 **L**

ELEV 539

TDZE 539

MISSED APCH FIX

2500

FONLU

VGS| and descent angles not coincident.

4 NM
Holding Pattern

ODDY

AVIGY

RW19

1

2200

-195°

2500

— 51 —

| CATEGORY | A | B | C | D |
|----------|-----------------------|-----------------------|-------------------------|----|
| INAV MDA | 1060-1 521 (600-1) | | 1060-1½ 521 (600-1½) | NA |
| CIRCLING | 1100-1 561 (600-1) | 1160-1 621 (700-1) | 1180-1¾ 641 (700-1¾) | NA |