

APP CRS	Rwy Ldg	3189
015°	TDZE	539
	Apt Elev	539

RNAV (GPS) RWY 1

SALUDA COUNTY (6J4)

RNP APCH.

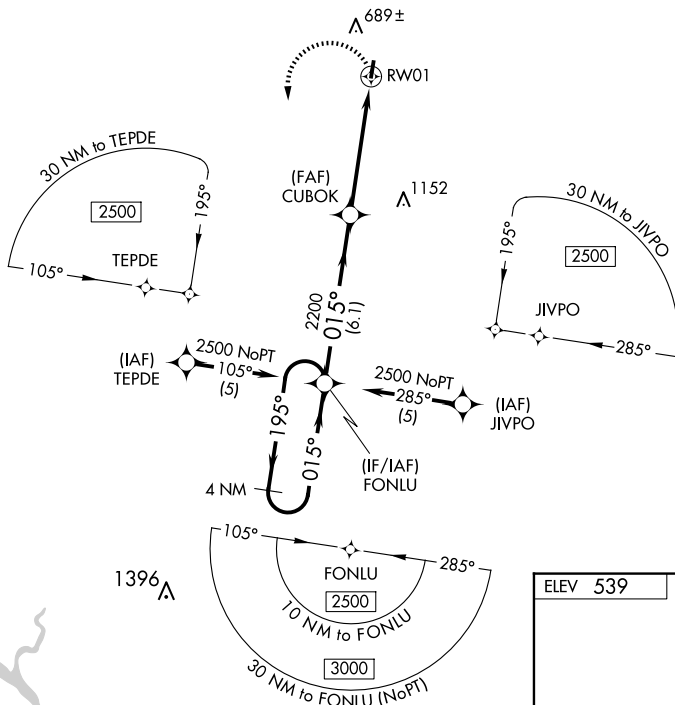
T
A NA

Procedure NA at night. Rwy 1 helicopter visibility reduction below 1 SM NA. Use Aiken altimeter setting; when not received, use Augusta Rgnl at Bush Fld altimeter setting and increase all MDA 100 feet and increase LNAV Cat C visibility $\frac{1}{4}$ SM.

MISSED APPROACH:
Climbing left turn to 2500
direct FONLU and hold.

AIK AWOS-3PT
118.025

AUGUSTA APP CON ★
119.15

CTAF
122.9 **L**

ELEV 539		TDZE 539
----------	--	----------

TDZE 539

VGSI and descent angles not coincident
(VGSI Angle 3.00/TCH 32).

2500	FONLU
------	-------

4 NM
Holding Pattern FONLU

CATEGORY	A	B	C	D
INAV MDA	1160-1	621 (700-1)	1160-1 ³ / ₄ 621 (700-1 ³ / ₄)	NA

SALUDA, SOUTH CAROLINA
Orig-B 07NOV19

33°56'N-81°48'W

SALUDA COUNTY (6J4)

RNAV (GPS) RWY 1

