

RNP APCH.

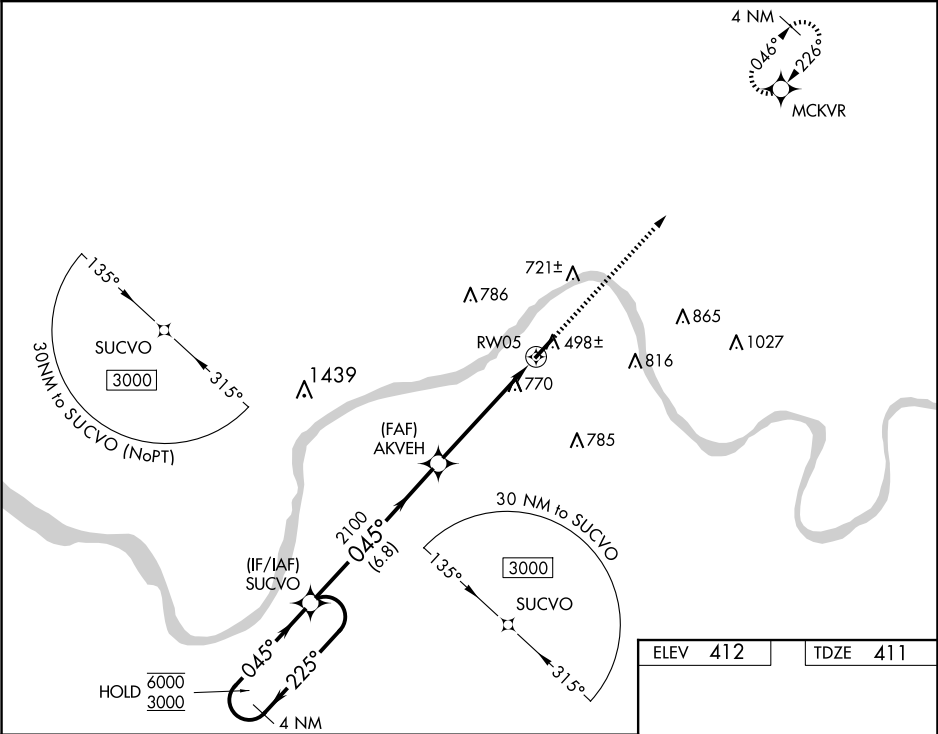
▽

NA

Rwy 5 helicopter visibility reduction below ¼ SM NA. When local altimeter setting not received, use Owensboro altimeter setting and increase all MDAs 60 feet; increase LP and LNAV Cat C visibility ⅛ SM and Circling Cat C visibility ¼ SM.

MISSED APPROACH:  
Climb to 3000 direct MCKVR and hold.

|                   |                                       |                          |
|-------------------|---------------------------------------|--------------------------|
| AWOS-3<br>119.775 | EVANSVILLE APP CON ★<br>124.025 290.9 | UNICOM<br>123.0 (CTAF) 0 |
|-------------------|---------------------------------------|--------------------------|



4 NM  
Holding Pattern

SUCVO

AKVEH

RW05

6000  
3000

2100

6.8 NM

5.2 NM

Visual Segment - Obstacles.

3000

MCKVR

| CATEGORY | A                     | B                     | C                       | D  |
|----------|-----------------------|-----------------------|-------------------------|----|
| LP MDA   | 1020-1                | 609 (700-1)           | 1020-1¾<br>609 (700-1¾) | NA |
| LNAV MDA | 1020-1                | 609 (700-1)           | 1020-1¾<br>609 (700-1¾) | NA |
| CIRCLING | 1020-1<br>608 (700-1) | 1080-1<br>668 (700-1) | 1080-1¾<br>668 (700-1¾) | NA |

ELEV 412

TDZE 411

MIRL Rwy 5-23 0

REIL Rws 5 and 23 0