

WAAS CH <b>62928</b> <b>W28A</b>	APP CRS <b>280°</b>	Rwy Idg TDZE <b>928</b> Apt Elev <b>928</b>	<b>4549</b>
--	------------------------	---	-------------

RNAV (GPS) RWY 28

BOGGS FLD (USW)

RNP APCH.

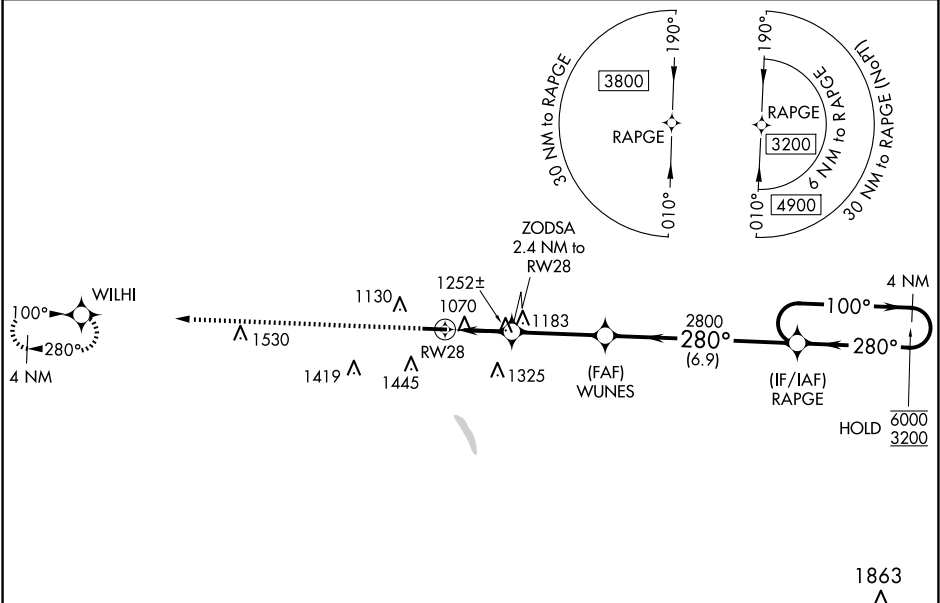
▼

NA

Rwy 28 helicopter visibility reduction below 1 SM NA. Rwy 28 Straight-in and Circling minimums NA at night. When local altimeter setting not received, use Charleston altimeter setting and increase all MDA's 80 feet, LP and LNAV Cats C and D visibility 1/8 SM and Circling Cats C and D visibility 1/4 SM. \*1780 when using Charleston altimeter setting.

MISSED APPROACH:  
Climb to 3500 direct  
WILHI and hold.

AWOS-3 <b>118.575</b>	CHARLESTON APP CON <b>124.1 269.125</b>	UNICOM <b>122.725 (CTAF) 0</b>
--------------------------	--	-----------------------------------



ELEV <b>928</b>	TDZE <b>928</b>
-----------------	-----------------

10

28

4549 X 75

3500

WILHI

Visual Segment - Obstacles.

WUNES

ZODSA 2.4 NM to RW28

RW28

1720\*

2800

RAPGE

4 NM Holding Pattern

6000

3200

100°

280°

2.4 NM

3.4 NM

6.9 NM

CATEGORY	A	B	C	D
LP MDA	1520-1	592 (600-1)	1520-1¾	592 (600-1¾)
LNAV MDA	1520-1	592 (600-1)	1520-1¾	592 (600-1¾)
CIRCLING	1560-1 632 (700-1)	1760-1¼ 832 (900-1¼)	1760-2½ 832 (900-2½)	1760-2¾ 832 (900-2¾)

NE-4, 10 JUL 2025 to 07 AUG 2025

NE-4, 10 JUL 2025 to 07 AUG 2025