

WAAS CH 99538 W34A	APP CRS 327°	Rwy Ldg TDZE Apt Elev	2901 35 35
--	------------------------	-----------------------------	---------------------------------------

RNAV (GPS) RWY 34

ORCAS ISLAND (ORS)

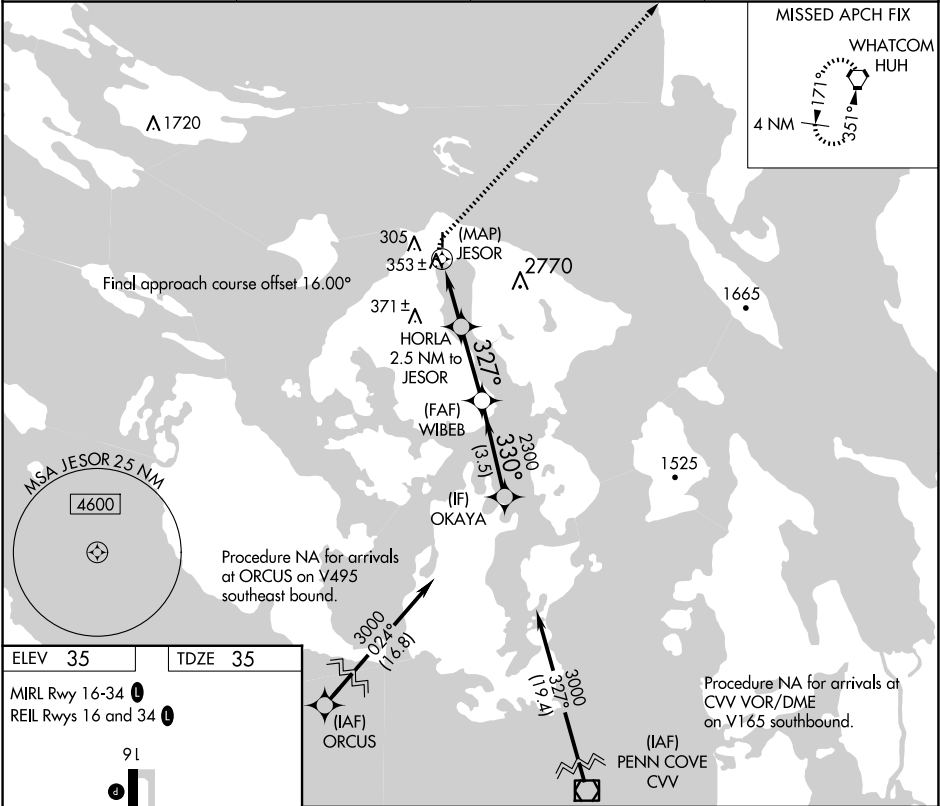
▼

▲

DME/DME RNP-0.3 NA. Helicopter visibility reduction below 1 SM NA.
WAAS required, if unable see RNAV GPS-A. When local altimeter setting
not received, use Friday Harbor altimeter setting and increase all MDA 40 feet
and LP Cat B visibility ¼ mile. Night landing: Rwy 34 NA.

MISSED APPROACH: Climbing right
turn to 2000 direct HUH VORTAC
and hold.

AWOS-3P 135.425	WHIDBEY APP CON 118.2 285.65 (SOUTH)	VICTORIA APP CON 132.7 (NORTH)	CTAF 128.250
---------------------------	--	--	------------------------



ELEV 35

TDZE 35

MIRL Rwy 16-34
REIL Rws 16 and 34

91

0.8% Up

2901 X 40

34

327°

2000	HUH	VGSI and descent angles not coincident (VGSI Angle 4.00/TCH 42).			
JESOR		HORLA 2.5 NM to JESOR	WIBEB	OKAYA	3000
1240		2300	330°		
0.5		2.5 NM	2.7 NM	3.5 NM	
CATEGORY	A	B	C	D	
LP	MDA	760-1	725 (800-1)	NA	
CIRCLING		1120-1¼ 1085 (1100-1¼)	1820-1½ 1785 (1800-1½)	NA	