

NEIGH, NEBRASKA

AL-10382 (FAA)

24305

APP CRS
188°

Rwy Idg	3700
TDZE	1762
Apt Elev	1774

RNAV (GPS) RWY 19

ANTELOPE COUNTY (4V9)

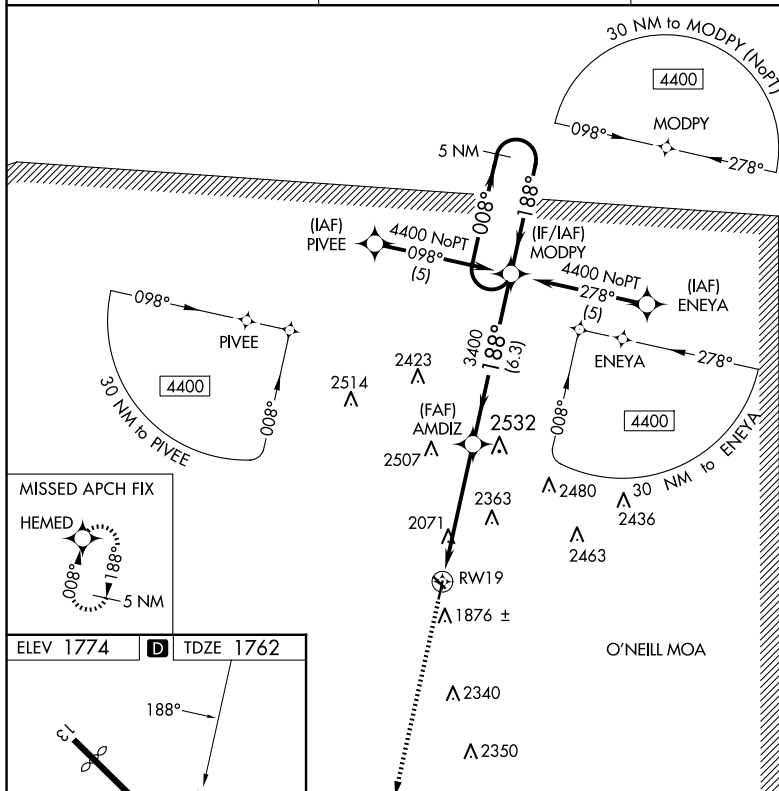
RNP APCH - GPS.

T Visibility reduction by helicopters NA. Use Albion altimeter
A NA setting, when not received, use Norfolk altimeter setting and
increase all MDA 40 feet.

MISSED APPROACH: Climb to 4400 direct HEMED and hold.

AWOS-3PT
119.275

MINNEAPOLIS CENTER
128.0 257.95

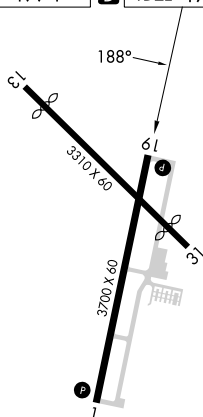
UNICOM
122.8 (CTAF) **L**

MISSED APCH FIX

HEMED 

ELEV 1774

D TDZE 1762



MIRL Rwy's 1-19 and 13-31 L

NELIGH, NEBRASKA

Orig-B 08SEP22

42°07'N-98°02'W

ANTELOPE COUNTY (4V9)

RNAV (GPS) RWY 19

NC-2, 10 JUL 2025 to 07 AUG 2025

CATEGORY	A	B	C	D
LNAV MDA	2380-1	618 (700-1)	NA	
C CIRCLING	2380-1 606 (700-1)	2440-1 666 (700-1)	NA	