

RUSHVILLE, NEBRASKA

AL-10381 (FAA)

23278

WAAS CH 78214 W32A	APP CRS 322°	Rwy Idg 3909 TDZE 3751 Apt Elev 3751
--	------------------------	---

RNAV (GPS) RWY 32

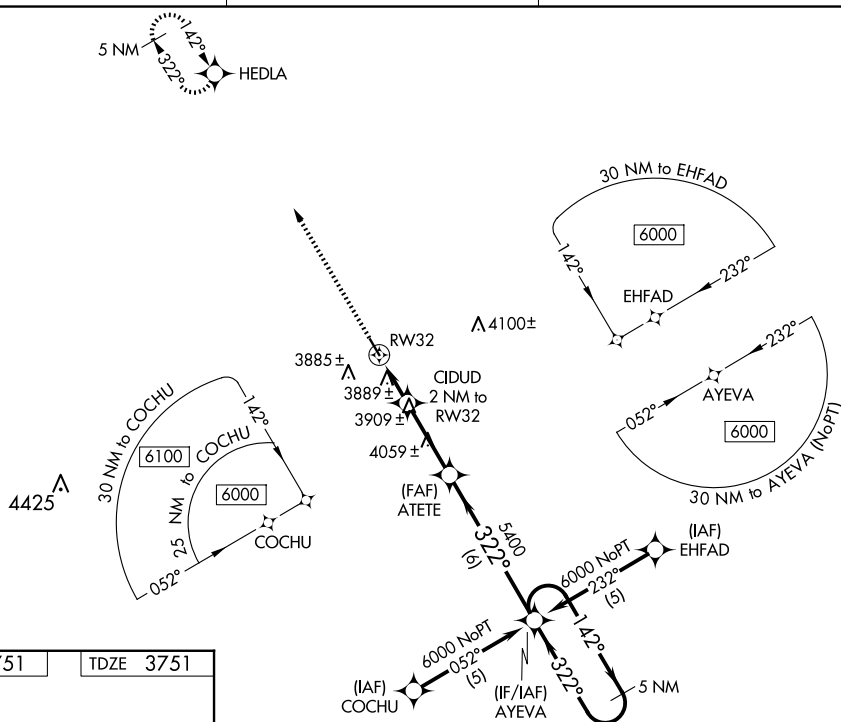
MODISSETT (9V5)

RNP APCH - GPS.

T Baro-VNAV NA. Visibility reduction by helicopters NA.
A NA Use Pine Ridge altimeter setting.

MISSED APPROACH: Climb to 6000 direct HEDLA and hold.

<p>126.775</p> <p>126.775</p>	<p>127.95 338.2</p> <p>127.95 338.2</p>	<p>122.9 0</p> <p>122.9 0</p>
-------------------------------	---	-------------------------------



ELEV 3751		TDZE 3751
-----------	--	-----------

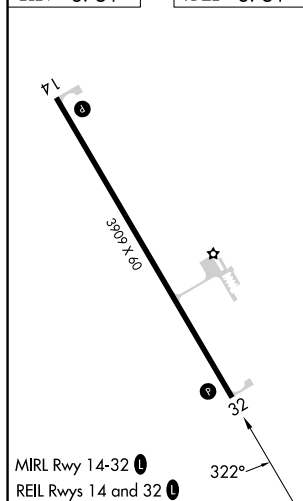


Diagram illustrating the RW32 instrument approach procedure. The diagram shows a 5 NM Holding Pattern at 6000 feet. The approach starts at RW32, proceeds to a 2 NM segment, then a 3 NM segment to the ATETE fix, and finally a 6 NM segment to the AYEVA fix. The final approach is a 5 NM Holding Pattern. The diagram also shows the 142° and 322° headings and the 5400 and 4420* altitudes. The diagram is labeled with 'CIDUD 2 NM to RW32', 'ATETE', 'AYEVA', '5 NM Holding Pattern', '142°', '322°', '6000', '5400', '4420*', 'RW32', '2 NM', '3 NM', '6 NM', 'GP 3.00°', and 'TCH 40'.

RUSHVILLE, NEBRASKA

Orig-A 06OCT22

MODISETT (9V5)

42°44'N-102°27'W

RNAV (GPS) RWY 32

NC-2, 10 JUL 2025 to 07 AUG 2025

NC-2, 10 JUL 2025 to 07 AUG 2025