

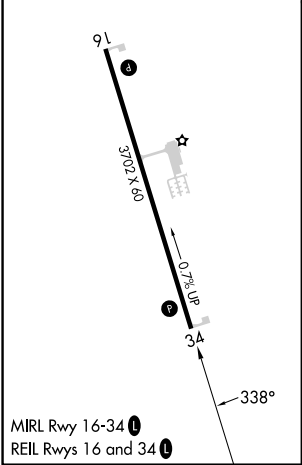
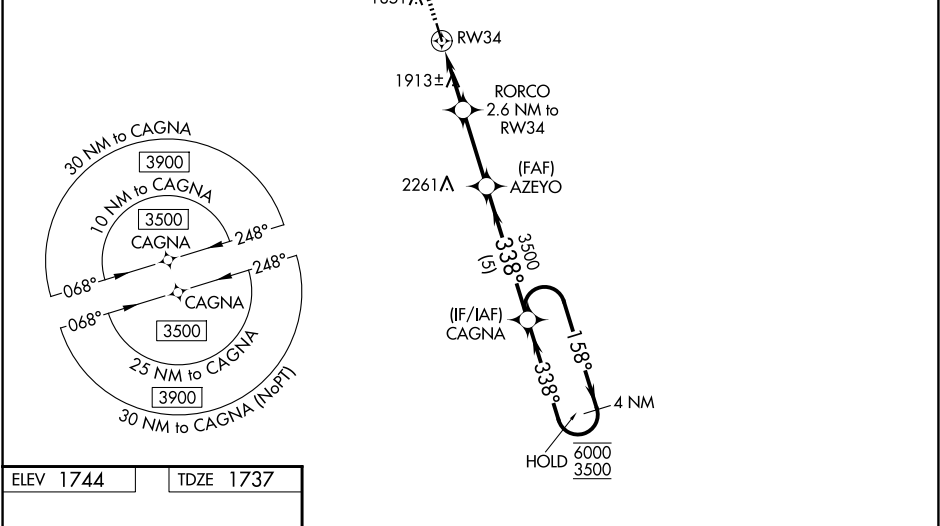
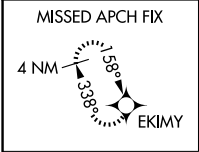
WAAS CH 42727 W34A	APP CRS 338°	Rwy Idg TDZE Apt Elev	3702 1737 1744
--	------------------------	-----------------------------	---

RNAV (GPS) RWY 34

RED CLOUD MUNI (7V7)

RNP APCH - GPS.	MISSED APPROACH: Climb to 3600 direct EKIMY and hold.
Baro-VNAV NA. Use K82 altimeter setting; when not received, use HSI altimeter setting and increase LPV DA to 2092 feet and LNAV/VNAV DA to 2255 feet and all MDAs 60 feet.	

K82 AWOS-3PT 118.45	MINNEAPOLIS CENTER 119.4 278.8	CTAF 122.9 0
-------------------------------	--	------------------------



3600	EKIMY	AZEYO	CAGNA	4 NM Holding Pattern
		3500		
	RORCO 2.6 NM to RW34	338°	158°	6000
		3500	338°	3500
				GP 3.00°
				TCH 40
	2.6 NM	2.9 NM	5 NM	
CATEGORY	A	B	C	D
LPV DA	2047-1	310 (400-1)	NA	
LNAV/VNAV DA	2210-1 ³ / ₈	473 (500-1 ³ / ₈)	NA	
LNAV MDA	2260-1	523 (600-1)	NA	
CIRCLING	2280-1 536 (600-1)	2300-1 556 (600-1)	NA	

NC-2, 10 JUL 2025 to 07 AUG 2025

NC-2, 10 JUL 2025 to 07 AUG 2025