

RED CLOUD, NEBRASKA

AL-10380 (FAA)

24249

WAAS CH 82027 W16A	APP CRS 158°	Rwy Idg TDZE Apt Elev	3702 1744 1744
--	------------------------	-----------------------------	---

RNAV (GPS) RWY 16
RED CLOUD MUNI (7V7)

RNP APCH - GPS.

NA Baro-VNAV NA. Rwy 16 helicopter visibility reduction below $\frac{3}{4}$ SM NA. Use K82 altimeter setting; when not received, use HSI altimeter setting and increase LPV DA to 2120 feet; increase LNAV/VNAV DA to 2290 feet and all visibilities $\frac{1}{4}$ SM. Increase all MDAs 60 feet.

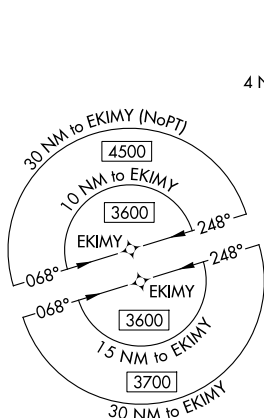
MISSED APPROACH: Climb to 3500
direct CAGNA and hold.

K82 AWOS-3PT
118.45

MINNEAPOLIS CENTER
119.4 278.8

CTAF
122.9 **L**

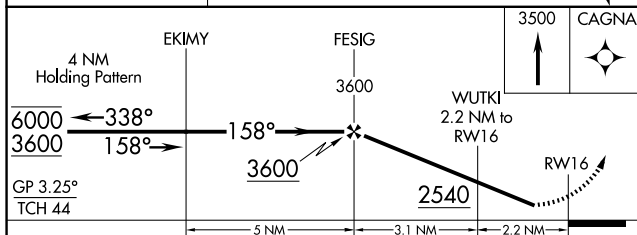
Λ 2665



MISSED APCH FIX



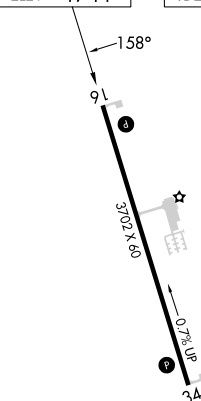
2261 A



CATEGORY		A	B	C	D
LPV	DA	2075-1	331 (400-1)	NA	
RNAV/ VNAV	DA	2245-1 $\frac{3}{8}$	501 (600-1 $\frac{3}{8}$)	NA	
RNAV	MDA	2240-1	496 (500-1)	NA	
CIRCLING		2280-1 536 (600-1)	2300-1 556 (600-1)	NA	

ELEV	1744		TDZE	1744
------	------	--	------	------

TDZE 1744

MIRL Rwy 16-34 **L**REIL Rwys 16 and 34 **L**

RED CLOUD, NEBRASKA

Amdt 1 05SEP24

40°05'N-98°32'W

RED CLOUD MUNI (7V7)

RNAV (GPS) RWY 16

NC-2, 10 JUL 2025 to 07 AUG 2025