

APP CRS	Rwy Idg	<b>4800</b>
<b>344°</b>	TDZE	<b>2724</b>
	Apt Elev	<b>2724</b>

RNAV (GPS) RWY 34  
ROSEBUD SIOUX TRIBAL (SUO)

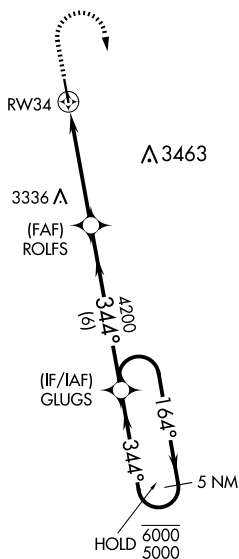
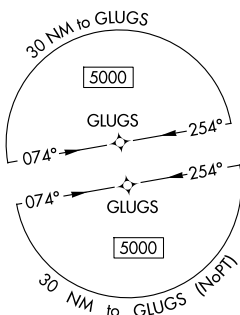
RNP APCH - GPS.

**T**  
**A** NA Rwy 34 helicopter visibility reduction below 1 SM NA. When local altimeter setting not received, use VTN altimeter setting. Procedure NA at night.

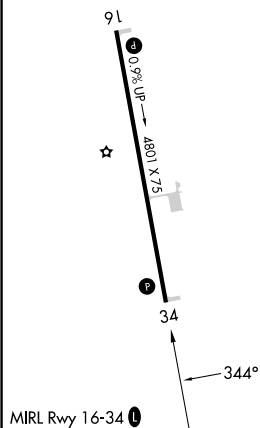
**MISSED APPROACH:** Climb to 3400 then climbing right turn to 5000 direct GLUGS and hold.

AWOS-3P  
119.075

VTN ASOS  
**118.075**

DENVER CENTER  
127.95 338.2CTAF  
122.9 L

ELEV 2724	<b>D</b>	TDZE 2724
-----------	----------	-----------



3400 5000 GLUGS VGS and descent angles not coincident (VGS Angle 3.00/TCH 30).

5 NM Holding Pattern

164° 344° 164°

4200

4.5 NM 6 NM

CATEGORY	A	B	C	D
RNAV MDA	3380-1	656 (700-1)	3380-1 $\frac{1}{8}$ 656 (700-1 $\frac{1}{8}$ )	NA
<b>C</b> CIRCLING	3380-1	656 (700-1)	3440-2 716 (800-2)	NA

ROSEBUD SIOUX TRIBAL (SUO)  
RNAV (GPS) RWY 34