

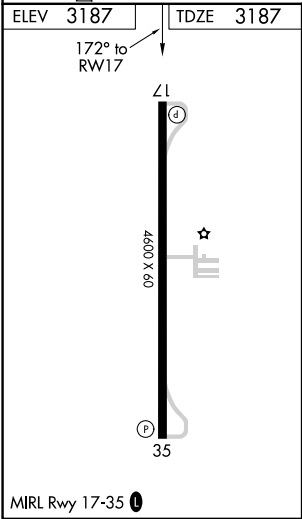
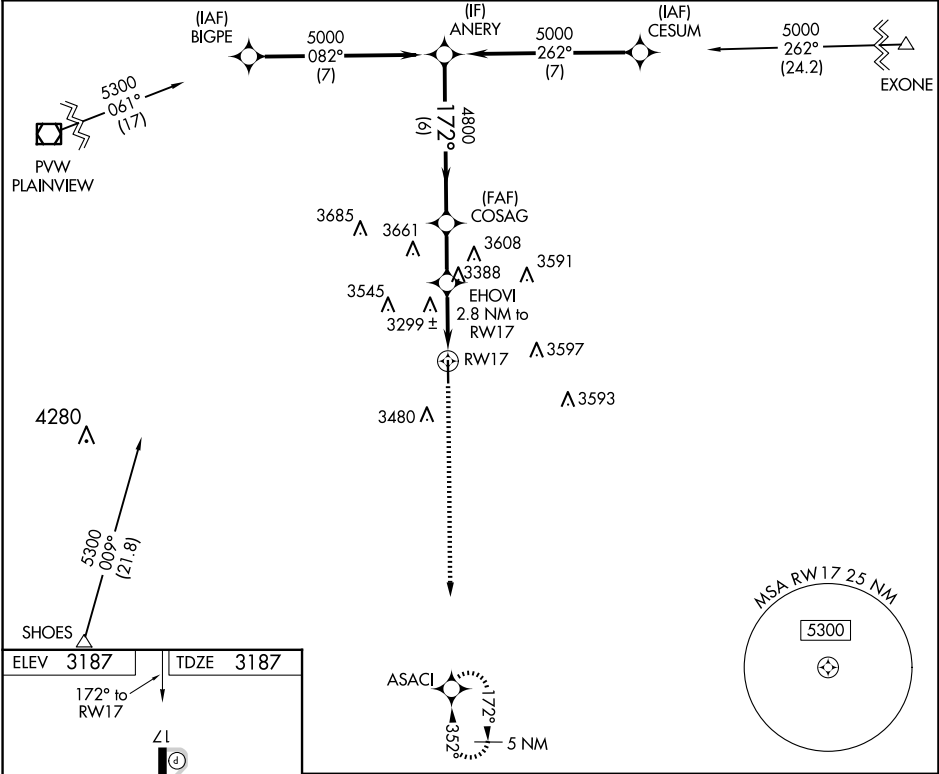
WAAS CH 78142 W17A	APP CRS 172°	Rwy Idg TDZE 3187 Apt Elev 3187
--	------------------------	---

RNAV (GPS) RWY 17

FLOYDADA MUNI (41F')

RNP APCH.	Rwy 17 helicopter visibility reduction below ¾ SM NA. Use Plainview alimeter setting, when not received, use Lubbock alimeter setting and increase all MDA 20 feet; increase LNAV Cat C visibility ¾ SM and Circling Cat C visibility ¼ SM.	MISSED APPROACH: Climb to 5000 direct ASACI and hold.
-----------	---	---

PVV AWOS-3 119.675	LUBBOCK APP CON 119.2 351.8	UNICOM 122.8 (CTAF) 0
------------------------------	---------------------------------------	---------------------------------



ANERY 5000				5000	ASACI
172°					
COSAG 4800					
3.00° TCH 40					
EHOVI 4120					
2.8 NM to RW17					
RW17					
6 NM				2.1 NM	2.8 NM
CATEGORY	A	B	C	D	
LP MDA	3640-1	453 (500-1)	3640-1 3/8 453 (500-1 3/8)	NA	
LNAV MDA	3720-1	533 (600-1)	3720-1 1/2 533 (600-1 1/2)	NA	
CIRCLING	3840-1 653 (700-1)	3920-1 733 (800-1)	3980-2 1/4 793 (800-2 1/4)	NA	

SC-2, 10 JUL 2025 to 07 AUG 2025

SC-2, 10 JUL 2025 to 07 AUG 2025