

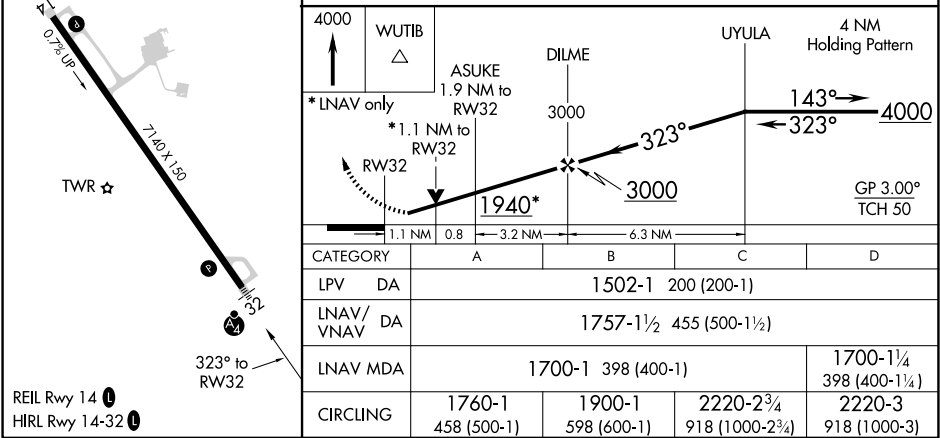
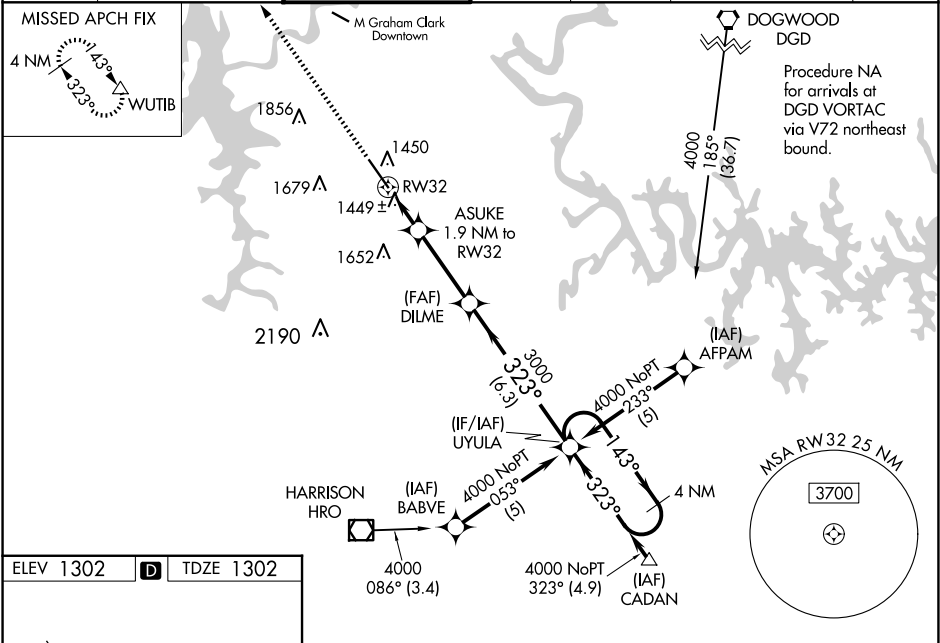
WAAS CH <b>93911</b> <b>W32A</b>	APP CRS <b>323°</b>	Rwy ldg <b>7140</b> TDZE <b>1302</b> Apt Elev <b>1302</b>
--	------------------------	---

RNAV (GPS) RWY 32

BRANSON (BBG)

RNP APCH.	MALSF	MISSED APPROACH: Climb to 4000 direct WUTIB and hold.
When local altimeter setting not received, use Harrison altimeter setting: increase LPV DA to 1549 feet; increase LNAV/VNAV DA to 1804 feet and all visibilities ¼ SM; increase all MDAs 60 feet and visibility Cats C and D ½ SM. VDP and Baro-VNAV NA when using Harrison altimeter setting. For uncompensated Baro-VNAV systems, LNAV/VNAV NA below -17°C (2°F) or above 46°C (114°F). Inop table does not apply.		

ATIS <b>124.625</b>	SPRINGFIELD APP CON <b>126.35</b>	BRANSON TOWER ★ <b>128.15</b> (CTAF) <b>0</b>	GND CON <b>118.4</b>	CLNC DEL <b>118.4</b>	SPRINGFIELD CLNC DEL <b>126.35</b> (When tower closed)	UNICOM <b>122.95</b>
------------------------	--------------------------------------	--	-------------------------	--------------------------	--	-------------------------



NC-3, 10 JUL 2025 to 07 AUG 2025

NC-3, 10 JUL 2025 to 07 AUG 2025