

LOC/DME I-BBG	APP CRS	Rwy Idg	7140
111.35	323°	TDZE	1302
Chan 50 (Y)		Apt Elev	1302

ILS or LOC RWY 32

BRANSON (BBG)

▼

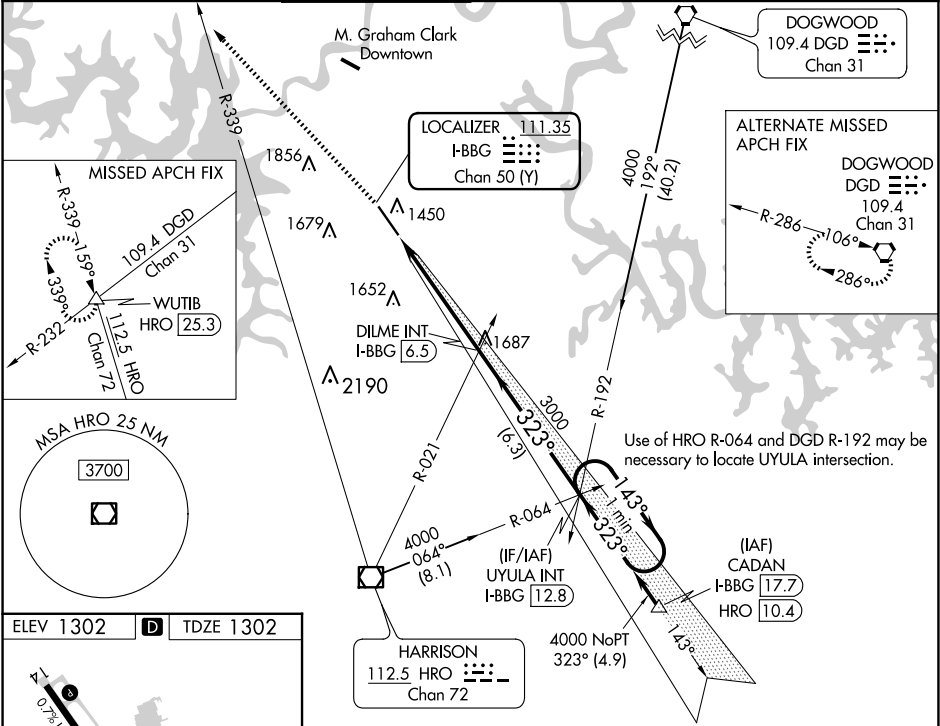
NA

Inop table does not apply. When local altimeter setting not received, use Harrison altimeter setting and increase S-ILS 32 DA to 1549 feet; increase all MDAs 60 feet and S-LOC 32 visibility Cat C/D and Circling visibility Cat C ¼ SM. VDP NA when using Harrison altimeter setting.

MALSF

MISSED APPROACH: Climb to 4000 on heading 315° and HRO VOR/DME R-339 to WUTIB INT/HRO 25.3 DME and hold.

ATIS 124.625	SPRINGFIELD APP CON 126.35	BRANSON TOWER★ 128.15 (CTAF) 0	GND CON 118.4	CLNC DEL 118.4	SPRINGFIELD CLNC DEL 126.35 (When tower closed)	UNICOM 122.95
-----------------	-------------------------------	-----------------------------------	------------------	-------------------	---	------------------



ELEV 1302 TDZE 1302

TWR★

REIL Rwy 14 1  
HIRL Rwy 14-32 1

FAF to MAP 5.1 NM

Knots	60	90	120	150	180
Min:Sec	5:06	3:24	2:33	2:02	1:42

<div>4000 ↑ hdg 315°</div>		<div>HRO R-339</div>		<div>WUTIB △</div>		<div>UYULA INT I-BBG 12.8</div>		<div>One Minute Holding Pattern</div>	
*LOC only.		*I-BBG 2.7		<div>DILME INT I-BBG 6.5</div>					
<div>I-BBG 1.4</div>		<div>3000</div>		<div>323°</div>		<div>3000</div>		<div>143°→</div> <div>←323°</div> <div>4000</div>	
<div>1.3 NM</div>		<div>3.8 NM</div>		<div>6.3 NM</div>				<div>GS 3.00°</div> <div>TCH 50</div>	
CATEGORY		A		B		C		D	
S-ILS 32		1502-1		200 (200-1)					
S-LOC 32		1760-1		458 (500-1)					
<div>CIRCLING</div>		1760-1		1900-1		2220-2¾		2220-3	
		458 (500-1)		598 (600-1)		918 (1000-2¾)		918 (1000-3)	