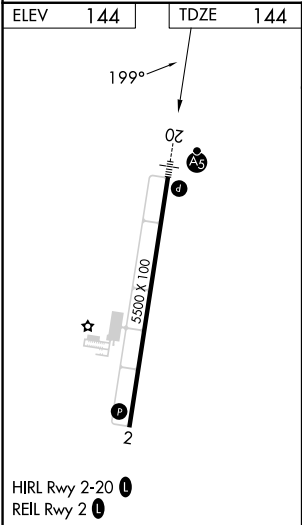
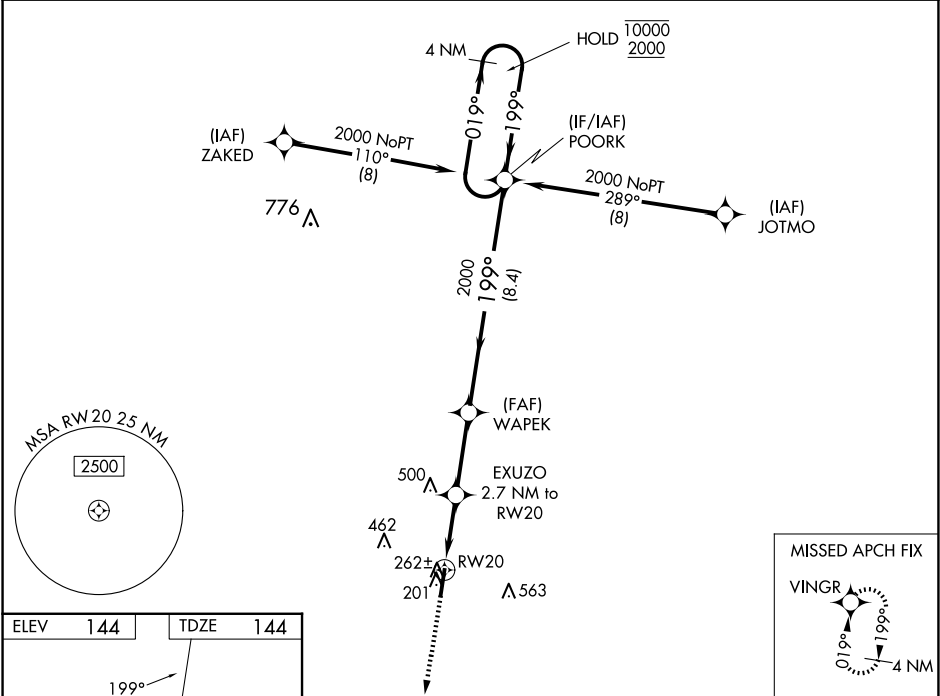


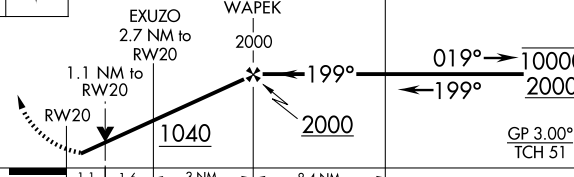



WAAS CH <b>72725</b> <b>W20A</b>	APP CRS <b>199°</b>	Rwy Idg <b>5500</b> TDZE <b>144</b> Apt Elev <b>144</b>
--	------------------------	---

RNAV (GPS) RWY 20  
HALIFAX/NORTHAMPTON RGNL (IXA)

RNP APCH-GPS. ⚠ Circling NA east of Rwy 2-20. Rwy 20 helicopter visibility reduction below ¾ SM NA. Inop table does not apply to LPV. For uncompensated Baro-VNAV systems, LNAV/VNAV NA below -15°C or above 54°C. For inop ALS increase LNAV/VNAV visibility all Cats to ¾ SM and LNAV visibility all Cats to 1 SM.		MALSR ⚠	MISSED APPROACH: Climb to 2000 direct VINGR and hold.
AWOS-3PT <b>119.975</b>	WASHINGTON CENTER <b>132.025 290.425</b>	UNICOM <b>123.075 (CTAF) 0</b>	



2000	VINGR	VGSI and RNAV glidepath not coincident (VGSI Angle 3.00/TCH 24).				4 NM Holding Pattern
						
		EXUZO 2.7 NM to RW20	WAPEK 2000	POORK		
		1.1 NM to RW20	199°	019°	10000	
		RW20	1040	2000	2000	
		1.1	1.6	3 NM	8.4 NM	
		GP 3.00° TCH 51°				
CATEGORY		A		B	C	D
LPV DA	DA			394-¾	250 (300-¾)	
LNAV/ VNAV	DA			423-¾	279 (300-¾)	
LNAV MDA				520-¾	376 (400-¾)	
 CIRCLING		580-1 436 (500-1)	600-1 456 (500-1)	780-1¾ 636 (700-1¾)	860-2¼ 716 (800-2¼)	