

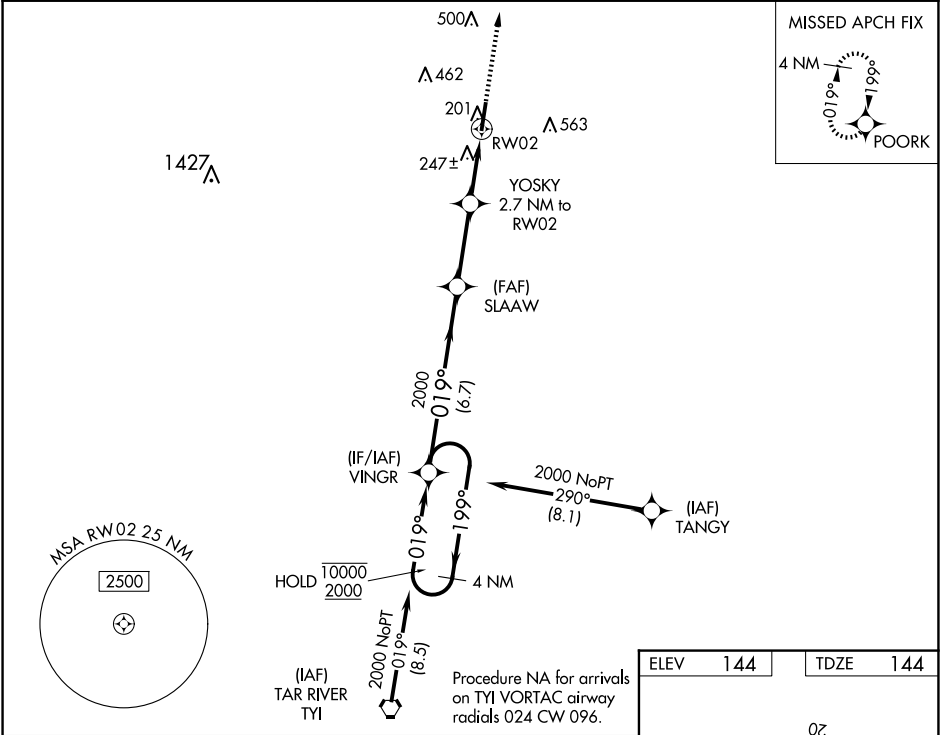
WAAS CH 78025 W02A	APP CRS 019°	Rwy Idg 5500 TDZE 144 Apt Elev 144
--	------------------------	---

RNAV (GPS) RWY 2

HALIFAX/NORTHAMPTON RGNL (IXA)

RNP APCH - GPS.	Rwy 2 helicopter visibility reduction below ¾ SM NA. For uncompensated Baro-VNAV systems, LNAV/VNAV NA below -15°C or above 54°C. Circling NA east of Rwy 2-20.	MISSED APPROACH: Climb to 2000 direct POORK and hold.
-----------------	---	---

AWOS-3PT 119.975	WASHINGTON CENTER 132.025 290.425	UNICOM 123.075 (CTAF) 0
----------------------------	---	-----------------------------------



4 NM Holding Pattern		VGSi and RNAV glidepath not coincident (VGSi Angle 3.00/TCH 25).		2000 POORK
10000 ← 199°		019° →		*LNAV only.
2000		2000		
GP 3.00°		*1040		
TCH 40		*1.1 NM to RWY 02		
		RWY 02		
		6.7 NM		
		3 NM		
		1.6 NM		
		1.1 NM		
CATEGORY	A	B	C	D
LPV DA		394-7/8	250 (300-7/8)	
LNAV/VNAV DA		433-1	289 (300-1)	
LNAV MDA		500-1	356 (400-1)	
CIRCLING	580-1 436 (500-1)	600-1 456 (500-1)	780-1¾ 636 (700-1¾)	860-2¼ 716 (800-2¼)

