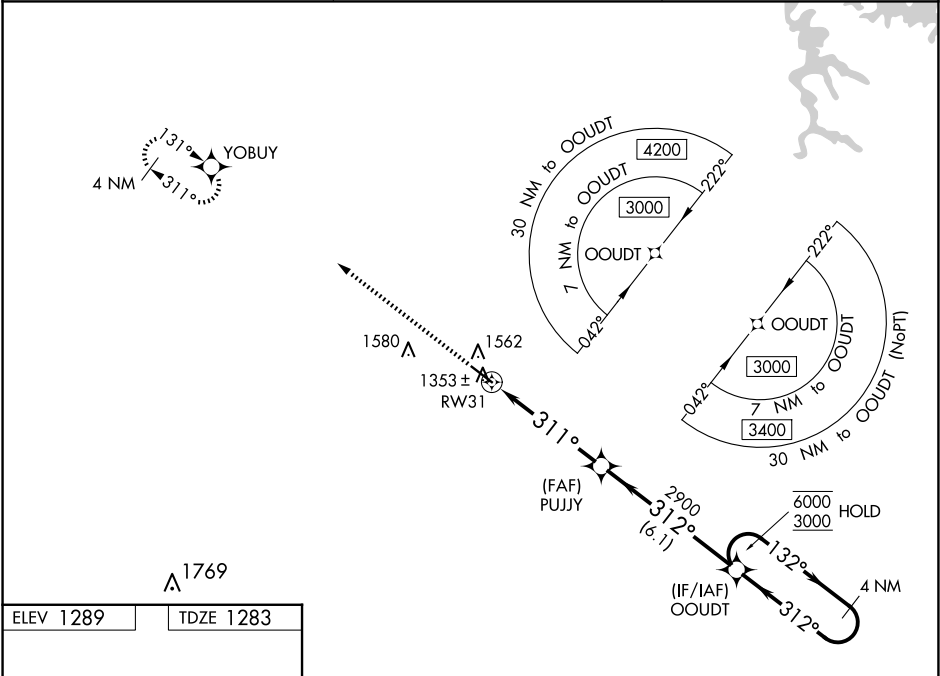


WAAS CH 99511 W31A	APP CRS 311°	Rwy Ldg TDZE 1283 Apt Elev 1289
--	------------------------	---

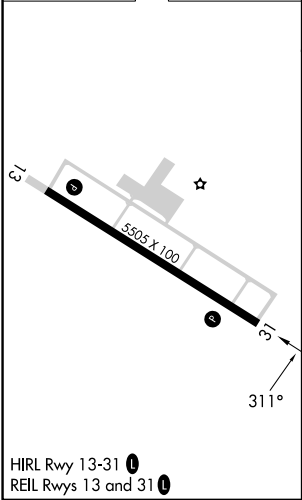
RNAV (GPS) RWY 31

PAULDING NORTHWEST ATLANTA (PUJ)

RNP APCH. <div><div>▼</div><div>▲</div><div>For uncompensated Baro-VNAV systems, LNAV/VNAV NA below -17°C or above 54°C.</div></div>		MISSED APPROACH: Climb to 3000 direct YOBUY and hold.
AWOS-3 126.225	ATLANTA APP CON 121.0 268.7	UNICOM 123.075 (CTAF) 0



ELEV 1289	TDZE 1283
-----------	-----------



3000	YOBUY	PUJY	OODT	4 NM Holding Pattern
*LNAV only.	*1.1 NM to RW31	2900	132°	6000 3000
RW31	311°	312°	312°	GP 3.00° TCH 48
1.1 NM	3.8 NM	6.1 NM		
CATEGORY	A	B	C	D
LPV DA	1483- ³ / ₄	200 (200- ³ / ₄)		
LNAV/VNAV DA	1582- ⁷ / ₈	299 (300- ⁷ / ₈)		
LNAV MDA	1680-1	397 (400-1)	1680-1 ¹ / ₈	397 (400-1 ¹ / ₈)
CIRCLING	1880-1	591 (600-1)	1940-1 ³ / ₄ 651 (700-1 ³ / ₄)	1940-2 651 (700-2)