

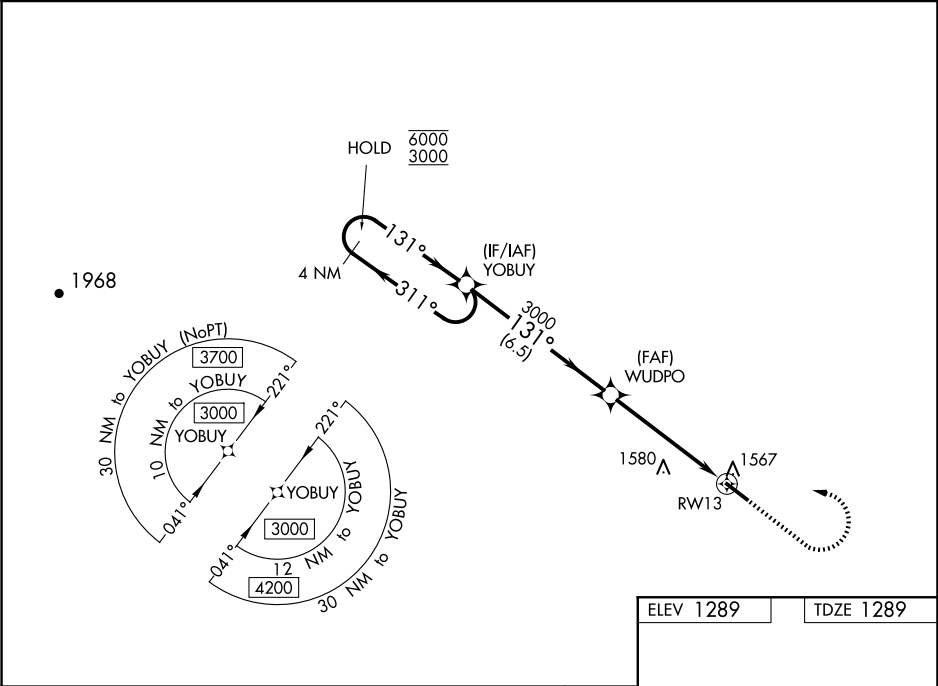
WAAS CH <b>99720</b> <b>W13A</b>	APP CRS <b>131°</b>	Rwy Idg TDZE <b>1289</b> Apt Elev <b>1289</b>
--	------------------------	---

RNAV (GPS) RWY 13

PAULDING NORTHWEST ATLANTA (PUJ)

RNP APCH.		MISSED APPROACH: Climb to 1800 then climbing left turn to 3000 direct YOBUY and hold.
<div><div>T</div><div>NA</div></div>	For uncompensated Baro-VNAV systems, LNAV/VNAV NA below -17°C or above 54°C.	

AWOS-3 <b>126.225</b>	ATLANTA APP CON <b>121.0 268.7</b>	UNICOM <b>123.075 (CTAF) 0</b>
--------------------------	---------------------------------------	-----------------------------------



4 NM Holding Pattern YOBUY		WUDPO	1800	3000	YOBUY
6000 ← 311°		3000	↑	↙	✧
GP 3.00°		3000	*LNAV only.		
TCH 50		3000	*1.5 NM to RW13		
← 6.5 NM		← 3.7 NM	↘ 1.5 NM		
CATEGORY	A	B	C	D	
LPV DA		1507-3/4	218 (300-3/4)		
LNAV/DA VNAV		1763-13/8	474 (500-13/8)		
LNAV MDA	1820-1	531 (600-1)	1820-1 1/2	531 (600-1 1/2)	
CIRCLING	1880-1	591 (600-1)	1940-1 3/4	1940-2	
			651 (700-13/4)	651 (700-2)	

