

LOC/DME I-PUJ

109.15

Chan 28 (Y)

APP CRS

311°

Rwy Idg

5505

TDZE

1283

Apt Elev

1289

ILS or LOC RWY 31

PAULDING NORTHWEST ATLANTA (PUJ)

DME required. RADAR required for procedure entry.

MISSED APPROACH: Climb to 3000 then climbing right turn to 3600 on heading 066° and RMG VORTAC R-132 to DALAS INT/RMG 18.5 DME and hold.

Autopilot coupled approach NA below 1680.

AWOS-3

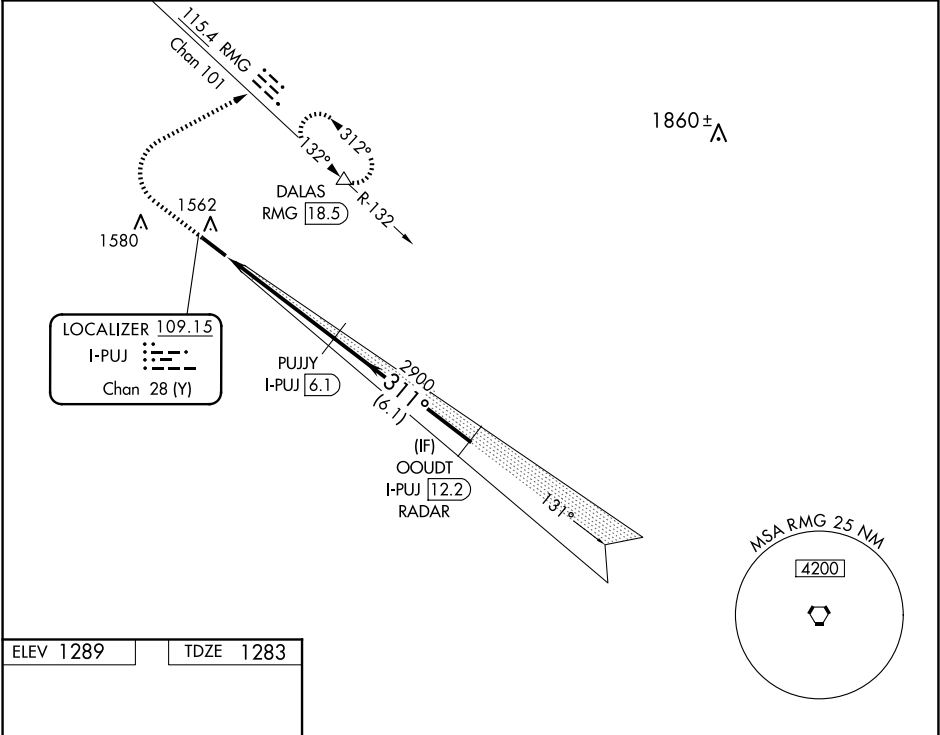
126.225

ATLANTA APP CON

121.0 268.7

UNICOM

123.075 (CTAF) 0



ELEV 1289

TDZE 1283

HIRL Rwy 13-31

REIL Rwy 13 and 31

311° 4.9 NM from FAF

3000

3600

RMG R-132

DALAS

PUJY I-PUJ 6.1

OODT I-PUJ 12.2 RADAR

*LOC only.

I-PUJ 1.2

*I-PUJ 2.3

2900

311°

3000

GS 3.00° TCH 48

1.1 NM

3.8 NM

6.1 NM

CATEGORY	A	B	C	D
S-ILS 31	1483-¾ 200 (200-¾)			
S-LOC 31	1680-1 397 (400-1)		1680-1⅛ 397 (400-1⅛)	
CIRCLING	1880-1 591 (600-1)		1940-1¾ 651 (700-1¾) 1940-2 651 (700-2)	