

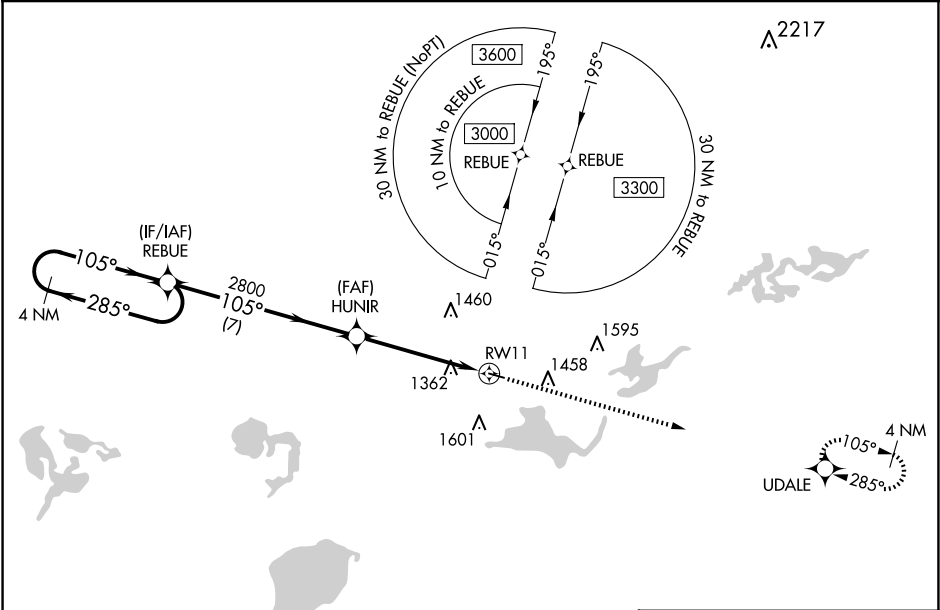
WAAS CH 50133 W11A	APP CRS 105°	Rwy Idg TDZE 1183 Apt Elev 1183
--	------------------------	---

RNAV (GPS) RWY 11
PAYNESVILLE MUNI (PEX)

⚠ Baro-VNAV and VDP NA when using Litchfield altimeter setting. For uncompensated Baro-VNAV systems, LNAV/VNAV NA below -17°C (2°F) or above 54°C (130°F). DME/DME RNP-0.3 NA. When local altimeter setting not received, use Litchfield altimeter setting and increase all DA 51 feet and all MDA 60 feet; increase LPV and LNAV/VNAV all Cats visibility 1/8 mile and LNAV Cat C and Circling Cat C visibility 1/4 mile.

MISSED APPROACH:
Climb to 3000 direct
UDALE and hold.

AWOS-3PT 120.35	MINNEAPOLIS CENTER 125.5 323.1	CTAF 122.9 0
---------------------------	--	------------------------



ELEV 1183		TDZE 1183		
<div>4 NM Holding Pattern</div> <div>3000 ← 285° 105° →</div> <div>GP 3.00° TCH 42</div>		<div>REBUE</div> <div>HUNIR</div> <div>3000</div> <div>UDALE</div> <div>2800</div> <div>*1.4 NM to RW11</div> <div>*LNAV only.</div> <div>RW11</div> <div>105° to RW11</div> <div>3302 X 75</div> <div>20</div>		
CATEGORY	A	B	C	D
LPV DA	1383-1 200 (200-1)			NA
LNAV/VNAV DA	1653-1½ 470 (500-1½)			NA
LNAV MDA	1680-1 497 (500-1)		1680-1½ 497 (500-1½)	NA
CIRCLING	1680-1 497 (500-1)	1760-1 577 (600-1)	1920-2 737 (800-2)	NA

MIRL Rwy 11-29

REIL Rws 11 and 29

NC-1, 10 JUL 2025 to 07 AUG 2025

NC-1, 10 JUL 2025 to 07 AUG 2025