

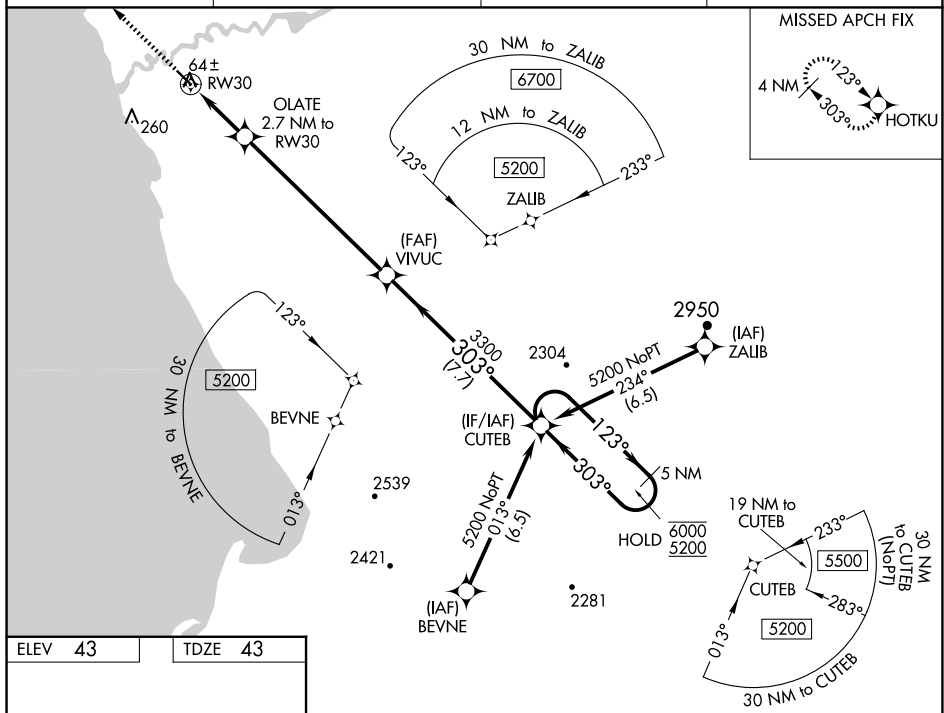
23222

RNAV (GPS) RWY 30
QUINHAGAK (AQH) (PAQH)

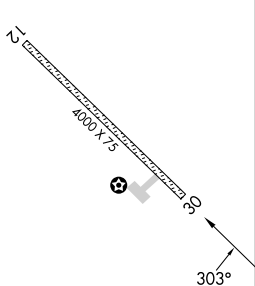
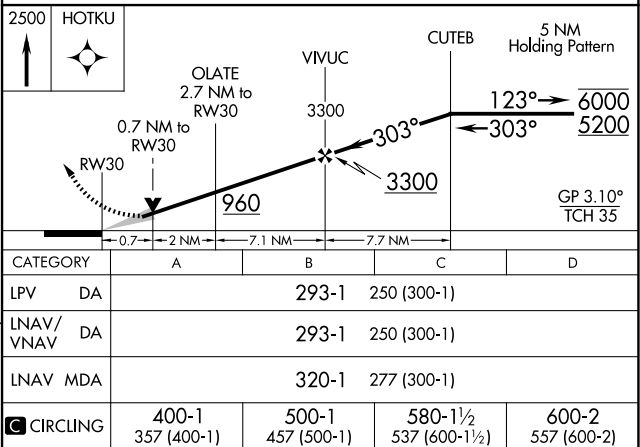
TA

For uncompensated Baro-VNAV systems,
LNAV/VNAV NA below -25°C or above 54°C.

MISSED APPROACH: Climb to 2500 direct HOTKU and hold, continue climb-in-hold to 2500.

UNICOM
122.8 (CTAF) **L**

ELEV	43		TDZE	43
------	----	--	------	----

MIRL Rwy 12-30 **L**

QUINHAGAK, ALASKA
Amdt 1A 14JUL22

59°45'N-161°51'W

QUINHAGAK (AQH) (PAQH)
RNAV (GPS) RWY 30

AK, 12 JUN 2025 to 07 AUG 2025