

QUINHAGAK, ALASKA

AL-10363 (FAA)

23222

WAAS
CH 99311
W12A

APP CRS
123°

Rwy Idg	4000
TDZE	42
Apt Elev	42

RNAV (GPS) RWY 12
QUINHAGAK (AQH) (PAQH)

RNP APCH.

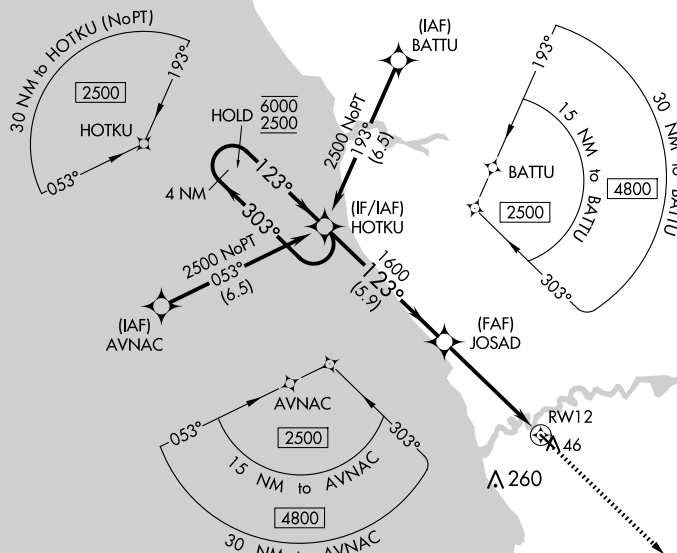
Procedure NA at night. Baro-VNAV and VDP NA when using Kipnuk altimeter setting. For uncompensated Baro-VNAV systems, LNAV/VNAV NA below -21°C or above 54°C. When local altimeter setting not received, use Kipnuk altimeter setting and increase all DA and MDA 160 feet; increase LPV all Cats visibility and LNAV/VNAV all Cats visibility $\frac{1}{2}$ SM, LNAV Cats C, D visibility $\frac{3}{8}$ SM, increase Circling Cat C visibility $\frac{1}{2}$ SM, increase Circling Cat D visibility $\frac{1}{4}$ SM.

MISSED APPROACH: Climb to 5200 direct CUTEB and hold, continue climb-in-hold to 5200.

AWOS-3P
121.575

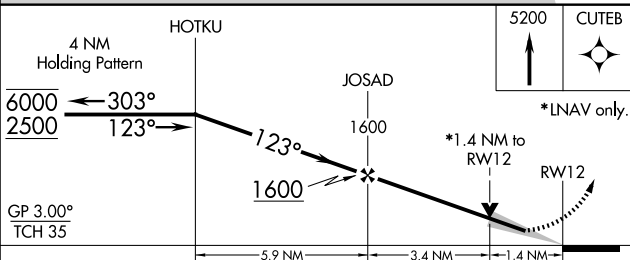
ANCHORAGE CENTER
125.2 372.0



KENAI RADIO
122.1

UNICOM
122.8 (CTAF) **L**


ELEV 4

TDZE 42



5200	CUTEB
	

GP 3.00°
TCH 35

CATEGORY		A	B	C	D
LPV	DA	292-1 250 (300-1)			
LNAV/ VNAV	DA	292-1 250 (300-1)			
LNAV	MDA	500-1 458 (500-1)		500-1½ 458 (500-1½)	
 CIRCLING		500-1 458 (500-1)		580-1½ 538 (600-1½)	600-2 558 (600-2)

MIRL Rwy 12-30 **L**

QUINHAGAK, ALASKA

Amdt 1A 20JUN19

59°45'N-161°51'W

QUINHAGAK (AQH) (PAQH)
RNAV (GPS) RWY 12

AK, 12 JUN 2025 to 07 AUG 2025