

WAAS CH 97337 W23A	APP CRS 234°	Rwy Idg TDZE Apt Elev	8000 126 130
--	------------------------	-----------------------------	---

RNAV (GPS) RWY 23

CAPE COD COAST GUARD AIR STATION (FMH)

RNP APCH.

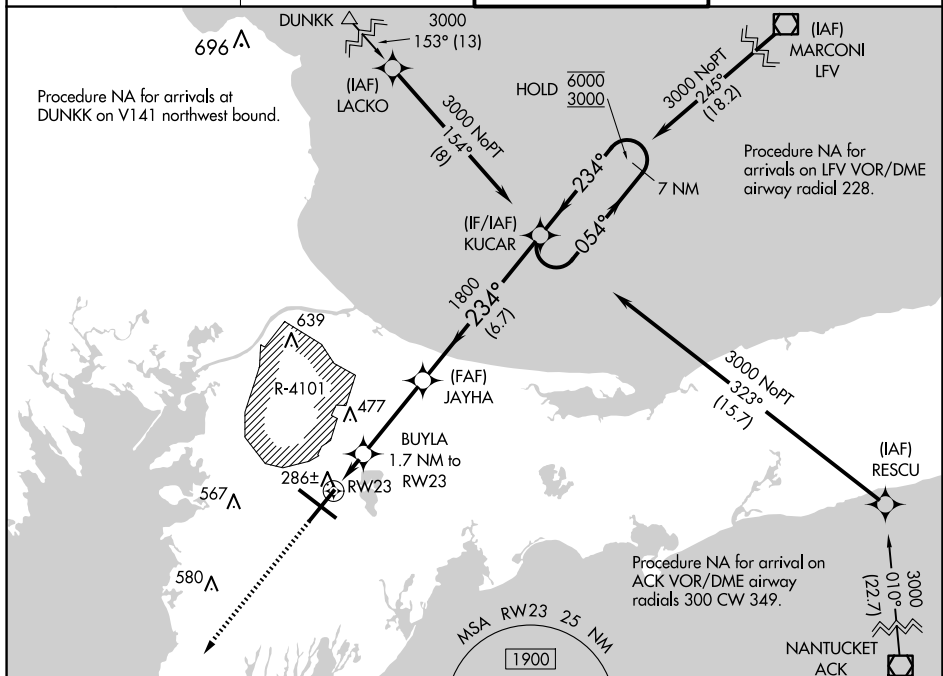
T For uncompensated Baro-VNAV systems, procedure NA below -15°C or above 54°C.
A Circling NA NE of Rwy 14 and NW of Rwy 23. For inop ALS, increase LNAV/VNAV all Cats visibility to RVR 5500 and LNAV Cats C and D visibility to RVR 6000.

MALSR

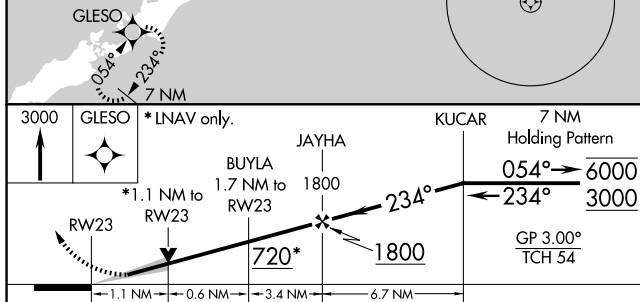



MISSED APPROACH:
Climb to 3000 direct
GLESO and hold.

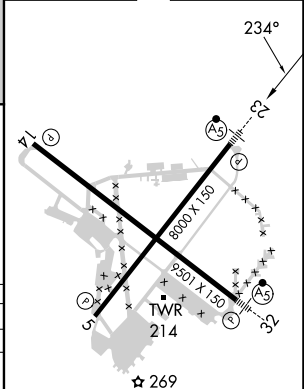
ATIS 120.475 236.825	BOSTON APP CON 118.2 284.6	COAST GUARD TOWER 128.425 291.1	GND CON 124.15 275.8
-------------------------	-------------------------------	------------------------------------	-------------------------



ELEV 130	TDZE 126
----------	----------



CATEGORY		A	B	C	D
LPV	DA	326/24 200 (200-½)			
LNAV/ VNAV	DA	467/30 341 (400-¾)			
LNAV	MDA	540/24 414 (500-½)		540/40 414 (500-¾)	
 CIRCLING		580-1 450 (500-1)	640-1 510 (600-1)	900-2½ 770 (800-2½)	900-2 ½ 770 (800-2½)



REIL Rwy 5 and 14
HIREL Rwy 5-23 and 14-32