

WAAS  
CH **78209**  
**W20A**

APP CRS  
**206°**

Rwy Ldg  
TDZE  
Apt Elev

**5500**  
**1020**  
**1028**

RNAV (GPS) RWY 20

MOREHEAD-ROWAN COUNTY CLYDE A THOMAS RGNL (SYM)

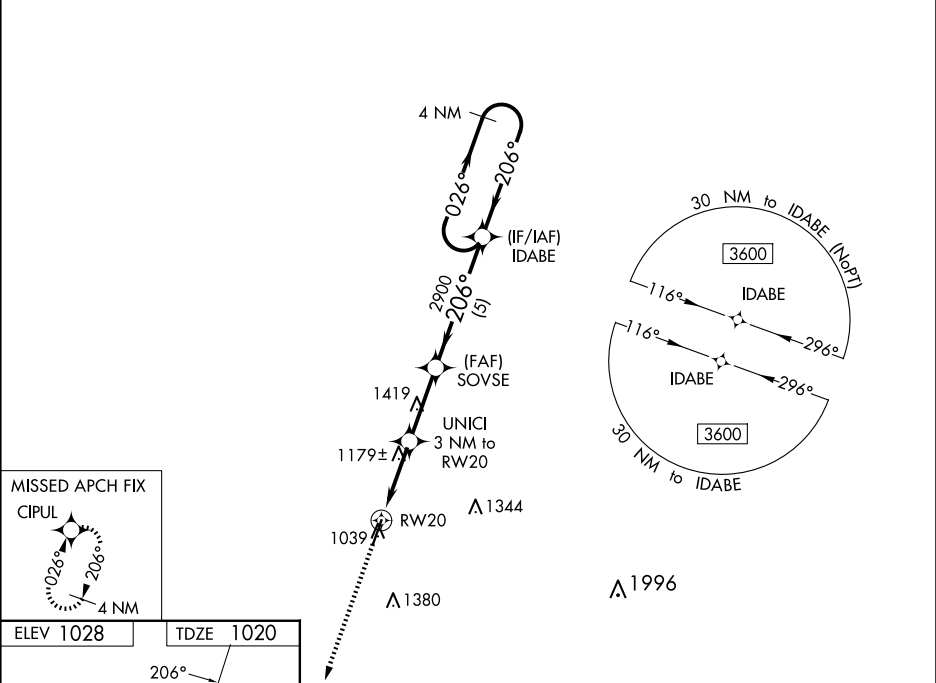
⚠

⚠

For uncompensated Baro-VNAV systems, LNAV/VNAV NA below -17°C (2°F) or above 54°C (130°F). DME/DME RNP-0.3 NA. Baro-VNAV and VDP NA when using Mount Sterling altimeter setting. When local altimeter setting not received, use Mount Sterling altimeter setting: increase all DA 50 feet and all MDA 60 feet; increase LPV and LNAV/VNAV all Cats visibility 1/8 mile, LNAV Cats C/D visibility 1/8 mile, and Circling Cats C/D visibility 1/4 mile.

MISSED APPROACH:  
Climb to 3600 direct CIPUL and hold.

AWOS-3 <b>119.95</b>	INDIANAPOLIS CENTER <b>124.225 360.725</b>	UNICOM <b>122.7 (CTAF) 0</b>
-------------------------	---	---------------------------------



ELEV 1028

TDZE 1020

206°

02

0.3% Up

5500 x 100

2

MIRL Rwy 2-20 0  
REIL Rwy 2 and 20 0

3600 CIPUL

\*LNAV only

RW20

UNICI 3 NM to RW20

SOVSE 2900

IDABE

4 NM Holding Pattern

026° → 3600

← 206°

GP 3.00°

TCH 40

CATEGORY	A	B	C	D
LPV DA	1270-7/8		250 (300-7/8)	
LNAV/VNAV DA	1453-1 1/2		433 (500-1 1/2)	
LNAV MDA	1440-1	420 (500-1)	1440-1 1/4	420 (500-1 1/4)
CIRCLING	1520-1	492 (500-1)	1760-2 732 (800-2)	1820-2 1/2 792 (700-2 1/2)