

WAAS CH <b>86909</b> <b>W02A</b>	APP CRS <b>026°</b>	Rwy Ldg TDZE Apt Elev	<b>5500</b> <b>1028</b> <b>1028</b>
----------------------------------------	------------------------	-----------------------------	-------------------------------------------

RNAV (GPS) RWY 2

MOREHEAD-ROWAN COUNTY CLYDE A THOMAS RGNL (SYM)

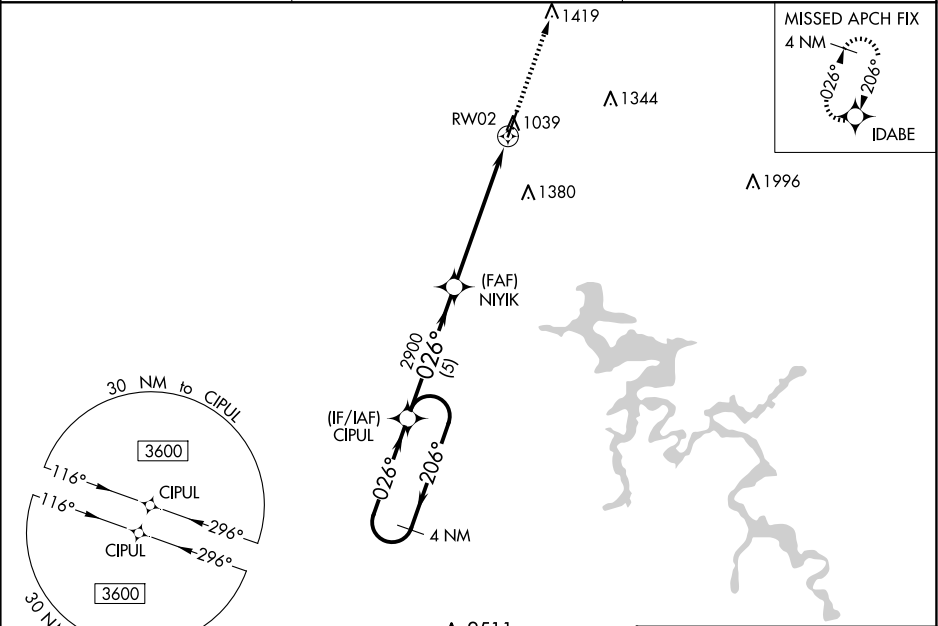
T

A

For uncompensated Baro-VNAV systems, LNAV/VNAV NA below -17°C (2°F) or above 54°C (130°F). DME/DME RNP-0.3 NA. Baro-VNAV and VDP NA when using Mount Sterling altimeter setting. When local altimeter setting not received, use Mount Sterling altimeter setting: increase all DA 50 feet and all MDA 60 feet; increase LPV all Cats and LNAV Cats C/D visibility 1/8 mile, LNAV/VNAV all Cats visibility 1/4 mile, and Circling Cats C/D visibility 1/4 mile.

MISSED APPROACH:  
Climb to 3600 direct IDABE and hold.

AWOS-3 <b>119.95</b>	INDIANAPOLIS CENTER <b>124.225 360.725</b>	UNICOM <b>122.7 (CTAF) 0</b>
-------------------------	-----------------------------------------------	---------------------------------



4 NM Holding Pattern

CIPUL

3600 ← 206° / 026° →

GP 3.00° TCH 40

NIIYK 2900

\*1.4 NM to RW02

\*LNAV only

RW02

5 NM, 4.4 NM, 1.4 NM

CATEGORY	A	B	C	D
LPV DA	1228-3/4 200 (200-3/4)			
LNAV/VNAV DA	1439-1 3/8 411 (500-1 3/8)			
LNAV MDA	1500-1	472 (500-1)	1500-1 3/8	472 (500-1 3/8)
CIRCLING	1520-1	492 (500-1)	1760-2 732 (800-2)	1820-2 1/2 792 (800-2 1/2)

ELEV 1028

TDZE 1028

MIRL Rwy's 2-20 0

REIL Rwy's 2 and 20 0

SE-1, 10 JUL 2025 to 07 AUG 2025

SE-1, 10 JUL 2025 to 07 AUG 2025