

WAAS CH <b>99533</b> <b>W21A</b>	APP CRS <b>213°</b>	Rwy Idg TDZE <b>3705</b> Apt Elev <b>3705</b>	<b>5001</b> <b>3705</b> <b>3705</b>
--	------------------------	---	---

RNAV (GPS) RWY 21

YOAKUM COUNTY (F98)

RNP APCH-GPS.

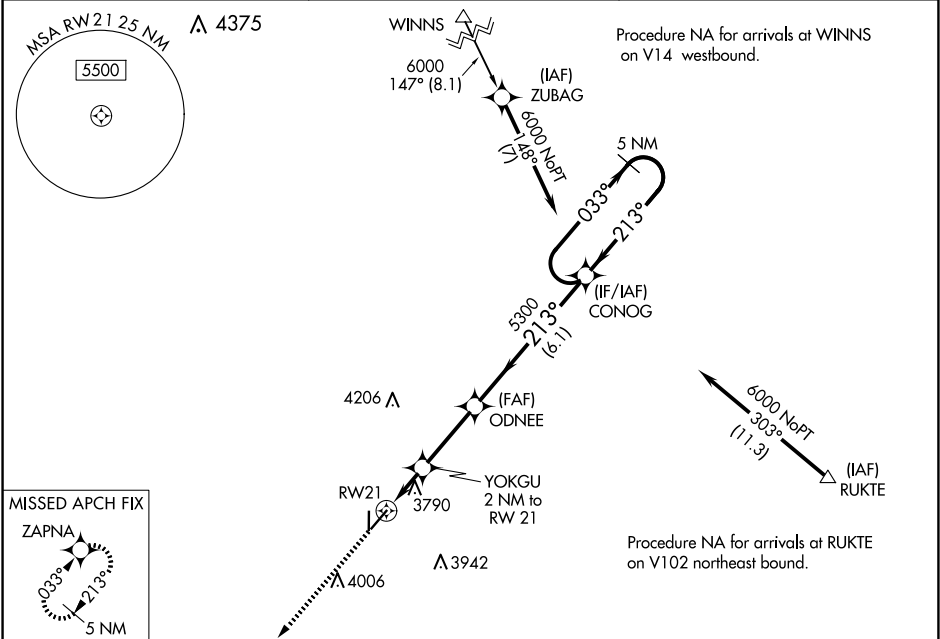
▼

NA

Baro-VNAV NA. Use Hobbs altimeter setting; when not received, use Seminole altimeter setting: increase LPV and LNAV/VNAV DA to 4088 and Cats A/B visibility to 1½ mile; increase all MDAS 60 feet. Helicopter Visibility reduction below ¾ SM NA.

MISSED APPROACH: Climb to 6000 direct ZAPNA and hold.

HOB AWOS-3 <b>119.75</b>	FORT WORTH CENTER <b>132.6 269.05</b>	CTAF <b>122.9 0</b>
-----------------------------	--	------------------------



ELEV 3705	TDZE 3705
-----------	-----------

213° to RW21

35

3924 X 60

5001 X 75

0.6% UP

6000

ZAPNA

VGSi and RNAV glidepath not coincident

5 NM Holding Pattern

CONOG

ODNEE

YOKGU 2 NM to RW 21

5300

213°

033°

6000

GP 3.00° TCH 40

2 NM

2.9 NM

6.1 NM

CATEGORY	A	B	C	D
LPV DA	4047-1½ 342 (400-1½)		NA	
LNAV/VNAV DA	4047-1½ 342 (400-1½)		NA	
LNAV MDA	4140-1 435 (500-1)		NA	
CIRCLING	4200-1 495 (500-1)	4260-1 555 (600-1)	NA	

MIRL Rwy 3-21 and Rwy 17-35 0