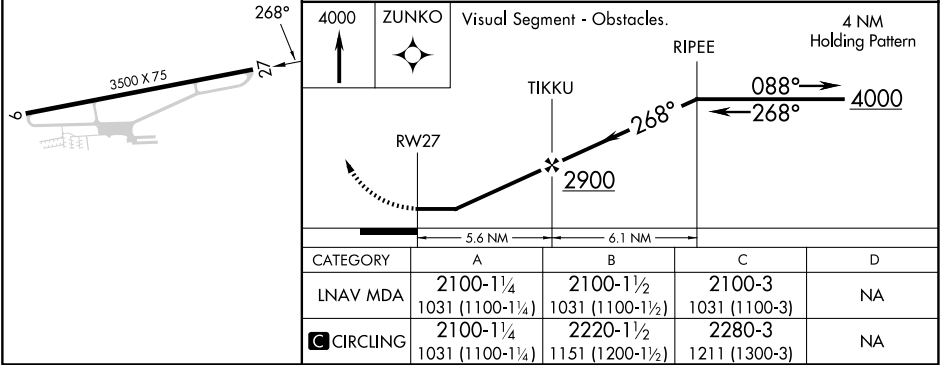
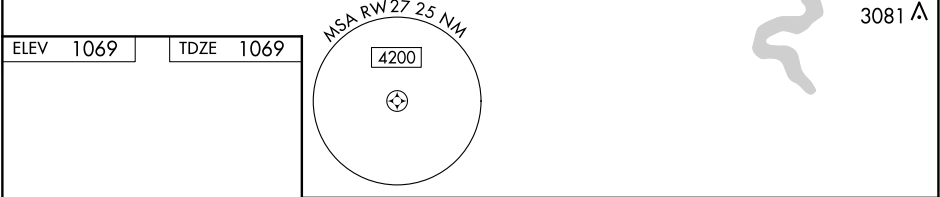
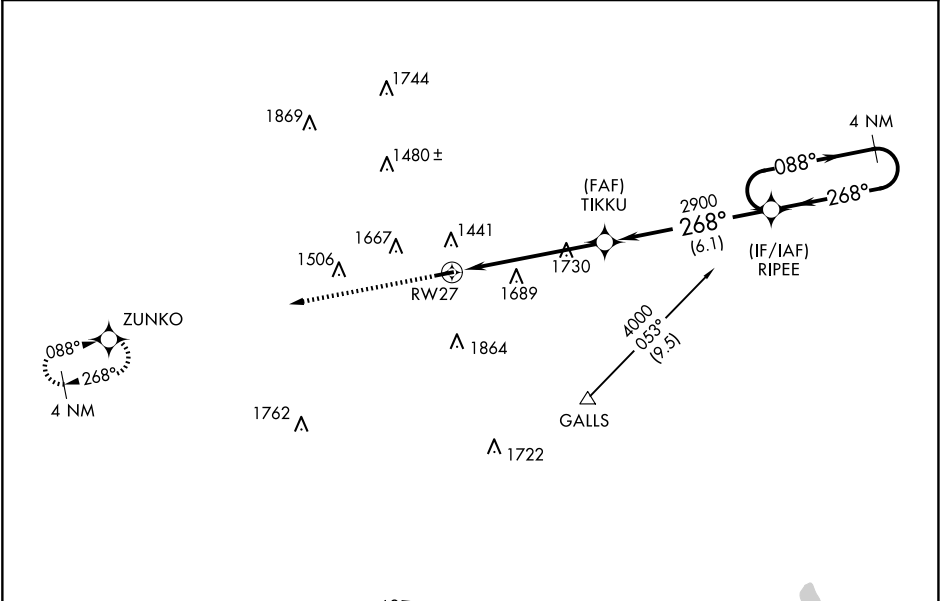


APP CRS	Rwy Idg	3500
268°	TDZE	1069
	Apt Elev	1069

RNAV (GPS) RWY 27  
GREENE COUNTY (WAY)

RNP APCH - GPS.	MISSED APPROACH: Climb to 4000 direct ZUNKO and hold.
▼ NA	Rwy 27 helicopter visibility reduction below 1 SM NA. Use Washington altimeter setting, when not received use Morgantown altimeter setting and increase all MDAs 20 feet. Procedure NA at night.

AFJ AWOS-3PT 119.175	CLARKSBURG APP CON★ 121.15 284.65	UNICOM 122.8 (CTAF)
-------------------------	--------------------------------------	------------------------



NE-4, 10 JUL 2025 to 07 AUG 2025

NE-4, 10 JUL 2025 to 07 AUG 2025