

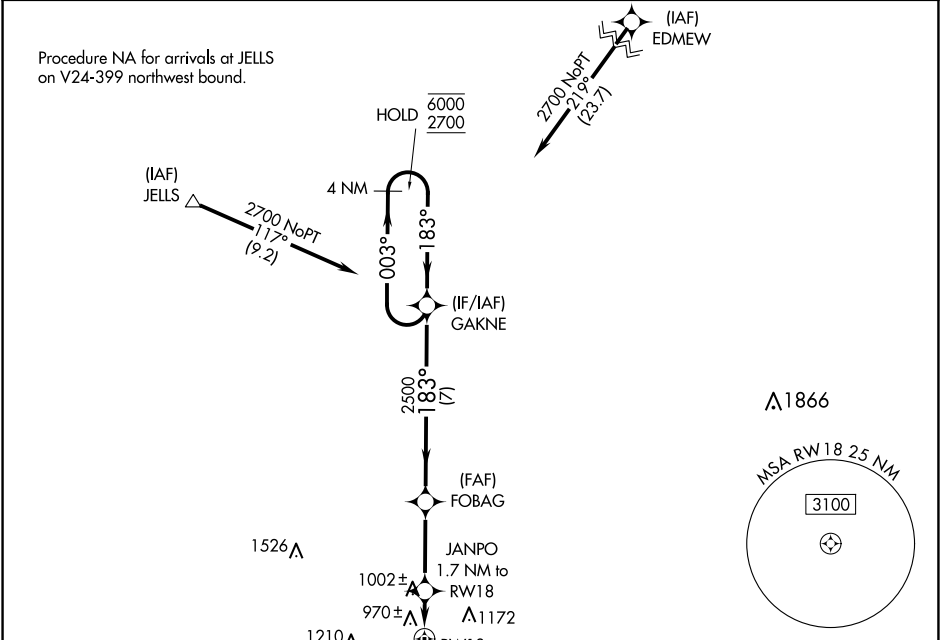
WAAS CH 56533 W18A	APP CRS 183°	Rwy Idg 4400 TDZE 898 Apt Elev 898
--	------------------------	---

RNAV (GPS) RWY 18

HENDRICKS COUNTY-GORDON GRAHAM FLD (2R:2)

RNP APCH - GPS.	MISSED APPROACH: Climb to 1420 then climbing right turn to 2700 direct GAKNE and hold.
<div><div>▼</div><div>NA</div></div> Rwy 18 helicopter visibility reduction below ¾ SM NA. Baro-VNAV NA. Use Indianapolis Intl altimeter setting.	

AWOS-3PT 118.025	IND ASOS 134.25	INDIANAPOLIS APP CON 121.1	UNICOM 122.7 (CTAF) 
----------------------------	---------------------------	--------------------------------------	---



ELEV 898		TDZE 898	
4 NM Holding Pattern		1420 2700 GAKNE	
6000 2700		JANPO 1.7 NM to RWY 18	
GP 3.00° TCH 44		RWY 18	
7 NM		3.2 NM	
CATEGORY		A	
LPV DA		1215-7/8 317 (400-7/8)	
LNAV/VNAV DA		1242-1 344 (400-1)	
LNAV MDA		1300-1 402 (500-1)	
CIRCLING		1380-1 482 (500-1)	
		1560-1 662 (700-1)	
		1600-2 702 (800-2)	
		NA	
		REIL Rwy 18 and 36	
		MIRL Rwy 18-36	