

APP CRS	Rwy Idg	3050
249°	TDZE	1755
	Apt Elev	1755

RNAV (GPS) RWY 26

PHILIPPI/BARBOUR COUNTY RGNL (79D)

▼

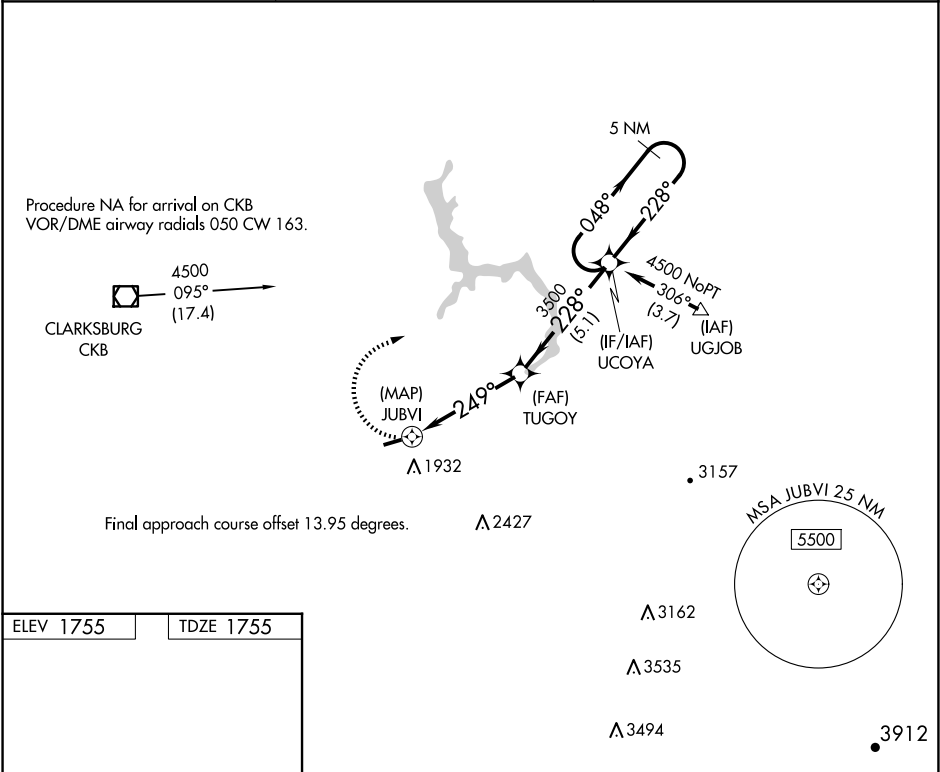
▲ NA

Rwy 26 helicopter visibility reduction below 1 SM NA.
DME/DME RNP-0.3 NA. Procedure NA at night.

Use Clarksburg altimeter setting, when not received,
use Buckhannon altimeter setting.

MISSED APPROACH: Climbing right
turn to 4500 direct UCOYA and hold.

CKB ASOS 127.825	CLARKSBURG APP CON ★ 121.15 284.65	CTAF 122.9 0
---------------------	---------------------------------------	-----------------



ELEV 1755

TDZE 1755

3275 X 60

249°

4500

UCOYA

VGSI and descent angles not coincident
(VGSI Angle 3.00/TCH 20).

5 NM Holding Pattern

JUBVI

TUGOY

UCOYA

4500

048°

228°

3500

3.25° TCH 30

0.5

4.5 NM

5.1 NM

CATEGORY	A	B	C	D
LNAV MDA	2460-1	705 (800-1)	NA	NA
CIRCLING	2520-1 765 (800-1)	2520-1¼ 765 (800-1¼)	NA	NA

REIL Rwy 8 0

MIRL Rwy 8-26 0

NE-4, 10 JUL 2025 to 07 AUG 2025

NE-4, 10 JUL 2025 to 07 AUG 2025