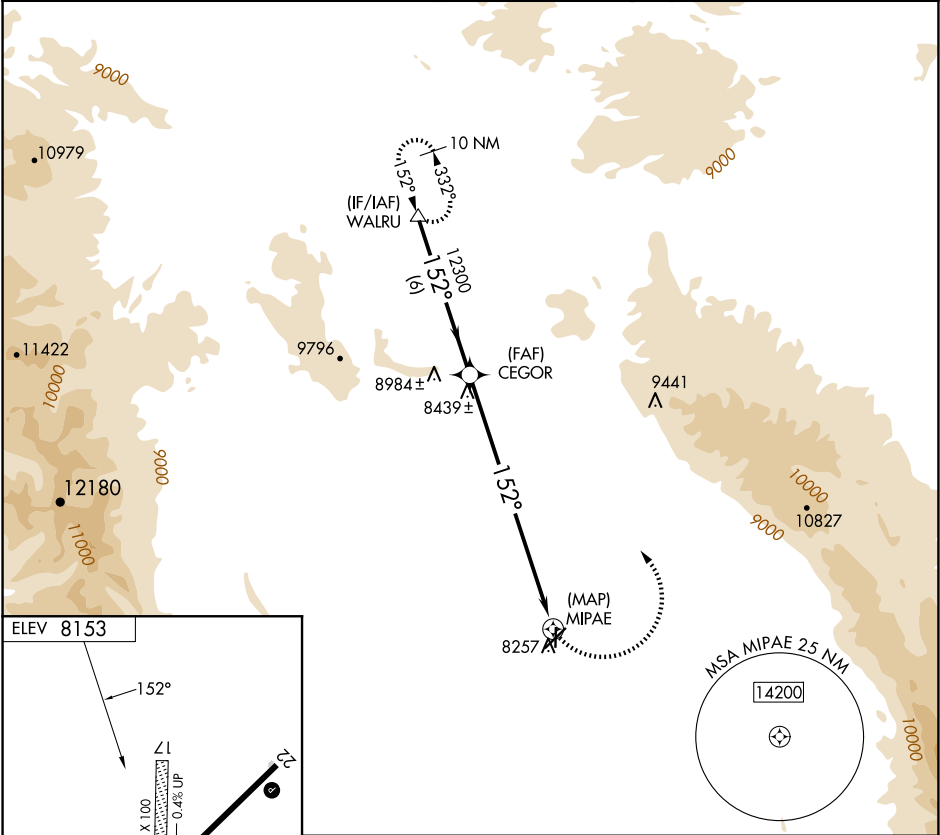


APP CRS	Rwy Ldg	N/A
152°	TDZE	N/A
	Apt Elev	8153

RNAV (GPS)-A
WALDEN-JACKSON COUNTY (33V)

▼ ▲ NA	When local altimeter setting not received, procedure NA. Circling NA southeast of Rwy 4-22. Circling to Rwy 17 and 35 NA. DME/DME RNP-0.3 NA.	MISSED APPROACH: Climbing left turn to 14200 direct WALRU and hold, continue climb-in-hold to 14200.
-----------	---	--

AWOS-3 118.625	DENVER CENTER 126.5 371.85	CTAF 122.9 0
-------------------	-------------------------------	-----------------



WALRU		CEGOR		MIPAE	
14200		12300		14200	
Procedure Turn NA		152°		152°	
6 NM		9.6 NM			
CATEGORY	A	B	C	D	
CIRCLING	8880-1	727 (800-1)	8880-2	727 (800-2)	NA