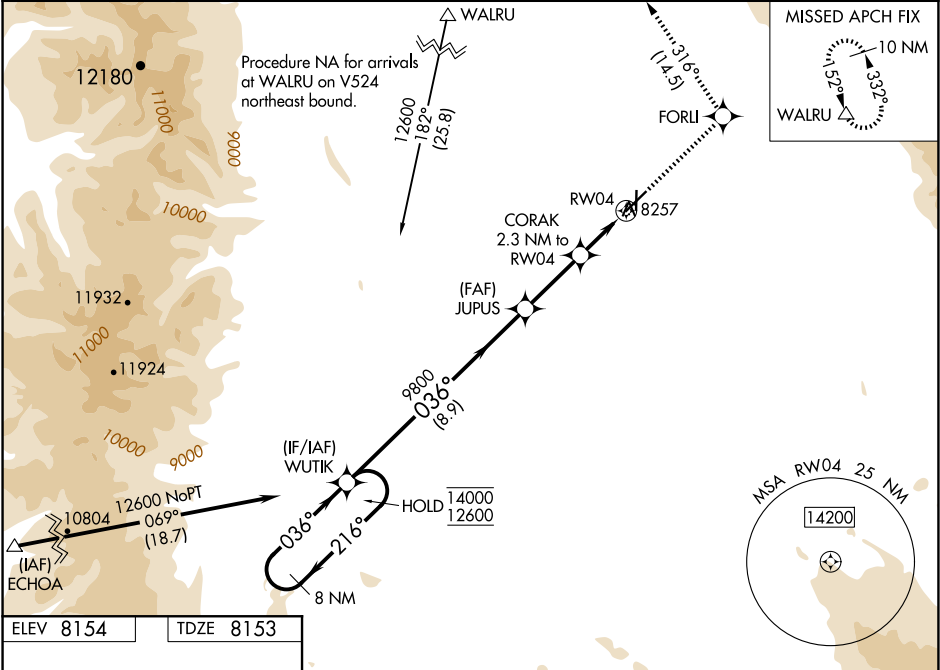


WAAS CH 78442 W04A	APP CRS 036°	Rwy Ldg 5900 TDZE 8153 Apt Elev 8154
--	------------------------	---

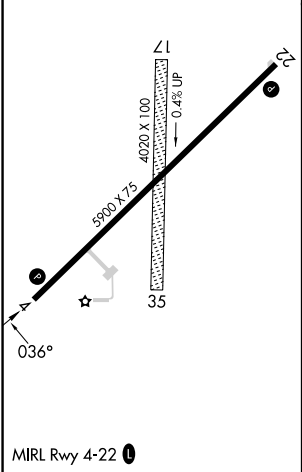
RNAV (GPS) RWY 4
WALDEN-JACKSON COUNTY (33V)

RNP APCH. Circling NA to Rws 17 and 35. Circling NA southeast of Rwy 4-22. Rwy 4 helicopter visibility reduction below ¾ SM NA. For uncompensated Baro-VNAV systems, LNAV/VNAV NA below -31°C or above 54°C.	MISSED APPROACH: (Do not exceed 200K until FORLI) Climb to 14200 direct FORLI and track 316° to WALRU and hold, continue climb-in-hold to 14200.
--	--

AWOS-3 118.625	DENVER CENTER 126.5 371.85	CTAF 122.9 0
--------------------------	--------------------------------------	------------------------



ELEV 8154	TDZE 8153
-----------	-----------



8 NM Holding Pattern				WUTIK	JUPUS	CORAK	FORLI	WALRU
14000 ← 216°				9800	9800	2.3 NM to RW04	316°	△
12600 → 036°				9800	9800	2.3 NM to RW04	316°	△
GP 3.00° TCH 35				9800	9800	2.3 NM to RW04	316°	△
8.9 NM				2.8 NM	1.3 NM	1 NM	1 NM	1 NM
CATEGORY	A	B	C	D				
LPV DA	8403-1	250 (300-1)		NA				
LNAV/VNAV DA	8407-1	254 (300-1)		NA				
LNAV MDA	8520-1	367 (400-1)		NA				
CIRCLING	8520-1 366 (400-1)	8620-1 466 (500-1)	8820-1 ¾ 666 (700-1¾)	NA				