

APP CRS	Rwy Idg	4000
244°	TDZE	574
	Apt Elev	574

RNAV (GPS) RWY 22

VENETIE (VEE) (PAVE)

RNP APCH-GPS.

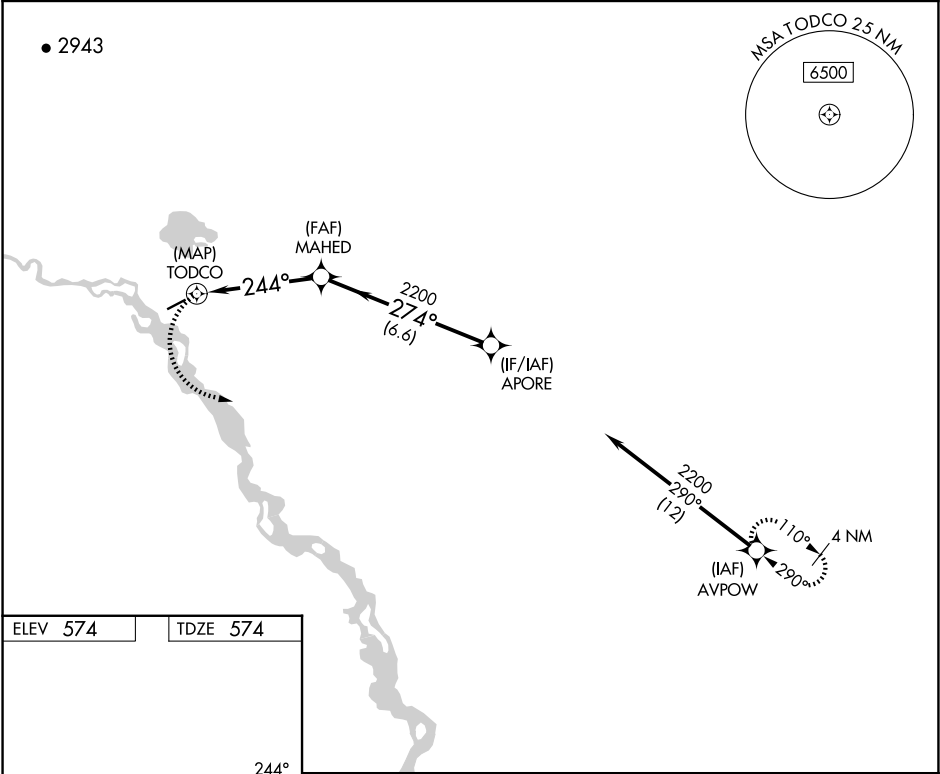
▼

NA

Rwy 22 helicopter visibility reduction below 1 SM NA.
Use Fort Yukon altimeter setting. Procedure NA at night.

MISSED APPROACH: Climbing left turn to 2200, direct AVPOW and hold.

FYU/PFYU AWOS-3P 125.8	ANCHORAGE CENTER 135.0 225.4	CTAF 122.9
---------------------------	---------------------------------	---------------



ELEV 574 TDZE 574

MIRL Rwy 4-22

	2200	AVPOW	MAHED	APORE
		244°	274°	2200
		≤ 3.00°		
		TCH 40		
	0.5	4.5 NM	6.6 NM	
CATEGORY	A	B	C	D
LNAV MDA	1160-1 586 (600-1)		1160-1¾ 586 (600-1¾)	
CIRCLING	1180-1 606 (700-1)		1180-1¾ 606 (700-1¾)	1260-2¼ 686 (700-2¼)

AK, 12 JUN 2025 to 07 AUG 2025

AK, 12 JUN 2025 to 07 AUG 2025