

WAAS CH 58238 W01A	APP CRS 354°	Rwy Idg 8100 TDZE 7637 Apt Elev 7664
--	------------------------	---

RNAV (GPS) RWY 1

STEVENS FLD (PSO)

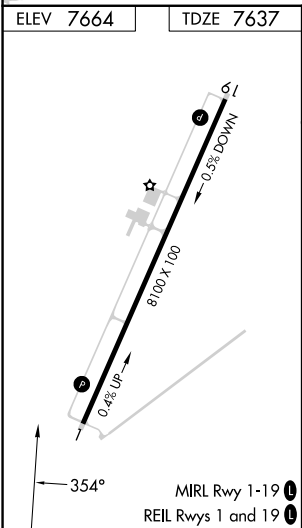
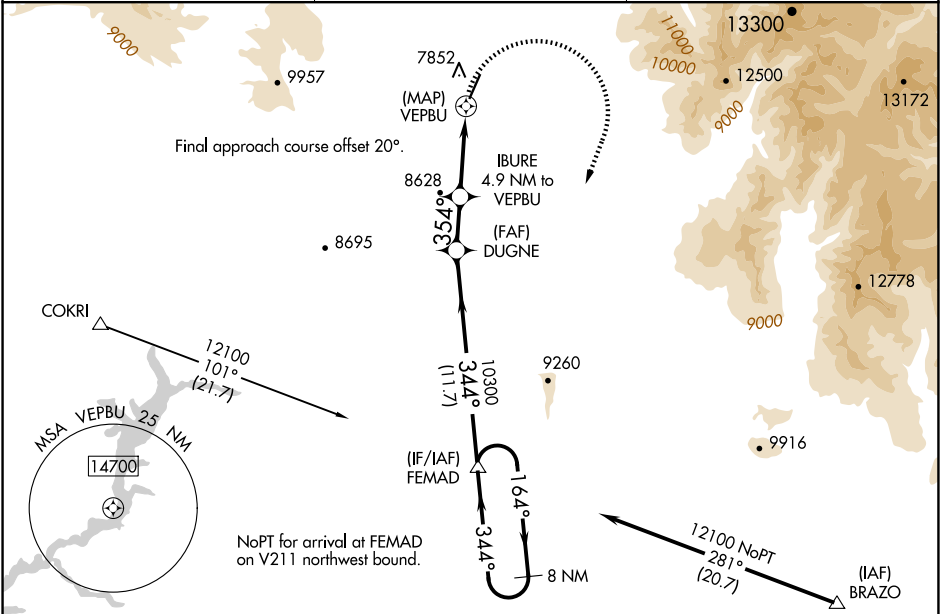
⚠

⚠

Circling to Rwy 19 NA at night. DME/DME RNP-0.3 NA. Helicopter visibility reduction below ¾ SM NA. When local altimeter setting not received, use Durango altimeter setting and increase all MDA 220 feet and LP and LNAV visibility Cat B ¼ mile and Cat C ¾ mile, and Circling Cats A/B ¼ mile.

MISSED APPROACH: Climbing right turn to 12100 direct FEMAD and hold.

AWOS-3PT 127.175	DENVER CENTER 118.575 348.7	UNICOM 122.7 (CTAF) 0
----------------------------	---------------------------------------	---------------------------------



8 NM Holding Pattern		FEMAD		12100	FEMAD
12100		164°	344°	344°	344°
			DUGNE	IBURE 4.9 NM to VEPBU	1.3 NM to VEPBU
			10300	354°	3.00° TCH 40
			9380		
			11.7 NM	2.9 NM	3.6 NM
CATEGORY	A	B	C	D	
LP MDA	8240-1	603 (600-1)	8240-1¾ 603 (600-1¾)	NA	
LNAV MDA	8280-1	643 (700-1)	8280-1⅞ 643 (700-1⅞)	NA	
CIRCLING	8420-1 756 (800-1)	8480-1¼ 816 (900-1¼)	8940-3 1276 (1300-3)	NA	