

APP CRS	Rwy Idg	4206
277°	TDZE	251
	Apt Elev	251

RNAV (GPS) RWY 28
BIBB COUNTY (ØA8)

RNP APCH-GPS.

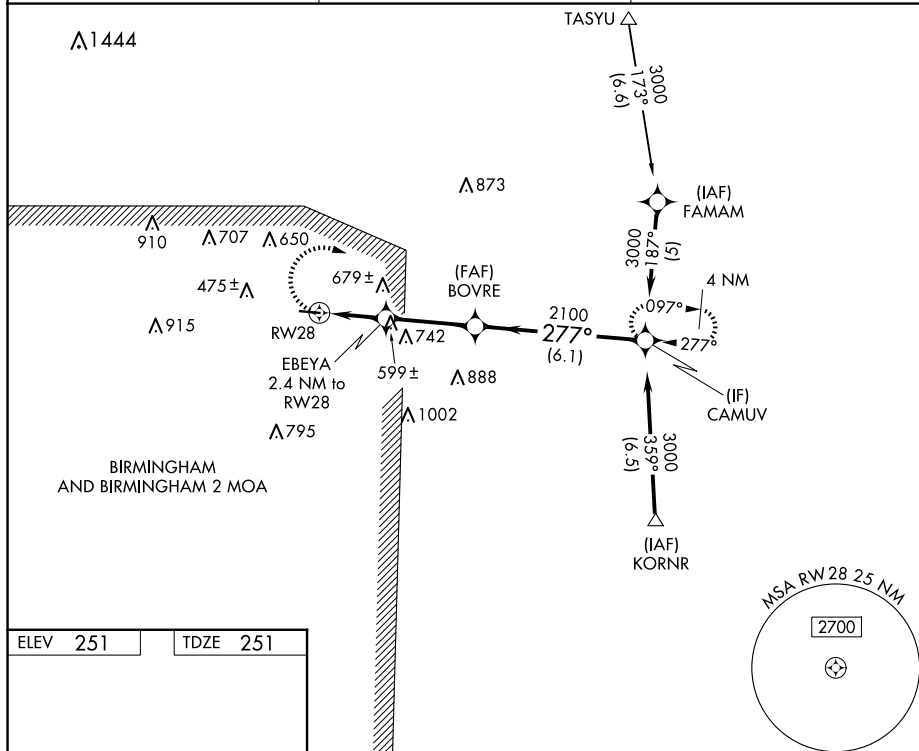
T Procedure NA at night. Rwy 28 helicopter visibility reduction below $\frac{3}{4}$ SM NA.
A NA Use Tuscaloosa altimeter setting; when not received, use Alabaster altimeter setting:
 increase all MDAs 20 feet and visibility LNAV Cat C $\frac{1}{4}$ SM and Circling Cat B/C $\frac{1}{4}$ SM.

MISSED APPROACH:
Climbing right turn to
3000 direct CAMUV
and hold.

TCL ASOS
132.825

ATLANTA CENTER
132.25 263.025

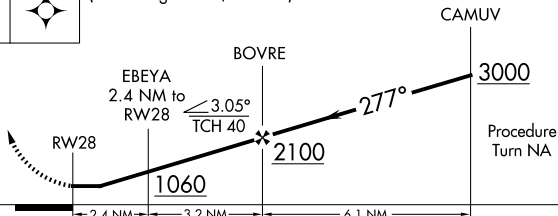
UNICOM
122.975 (CTAF) **L**



ELEV	251		TDZE	251
------	-----	--	------	-----



3000	CAMUV	VGSI and descent angles not coincident (VGSI Angle 4.00/TCH 40).
------	-------	--



CATEGORY	A	B	C	D
LNAV MDA	920-1	669 (700-1)	920-1 ³ / ₄ 669 (700-1 ³ / ₄)	NA
CIRCLING	1020-1 769 (800-1)	1060-1 809 (900-1)	1120-2 ¹ / ₂ 869 (900-2 ¹ / ₂)	NA

CENTREVILLE, ALABAMA

Orig-A 06OCT22

BIBB COUNTY (0A8)

32°56'N-87°05'W

RNAV (GPS) RWY 28

SE-4, 10 JUL 2025 to 07 AUG 2025

SE-4, 10 JUL 2025 to 07 AUG 2025