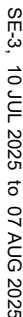


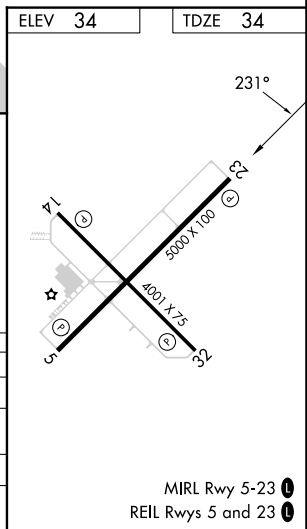
RNAV (GPS) RWY 23
OKEECHOBEE COUNTY (OBE)

MISSED APPROACH: Climb to 2000 direct FINLO and hold.

UNICOM
123.0 (CTAF) **L**



SE-3, 10 JUL 2025 to 07 AUG 2025



CATEGORY		A	B	C	D
LPV	DA	320-1		286 (300-1)	
LNAV/ VNAV	DA	435-1½		401 (500-1½)	
LNAV	MDA	400-1		366 (400-1)	
CIRCLING		500-1	466 (500-1)	660-1¾ 626 (700-1¾)	660-2 626 (700-2)