

WAAS CH 40309 W20A	APP CRS 199°	Rwy Idg 5002 TDZE 388 Apt Elev 389
--	------------------------	---

RNAV (GPS) RWY 20
SALINE COUNTY RGNL (SUZ)

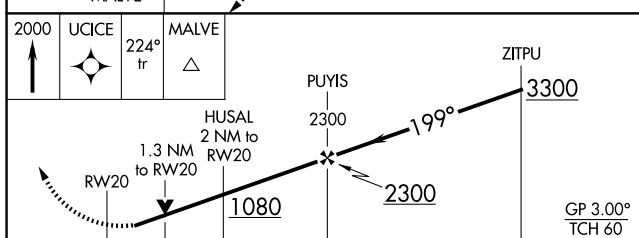
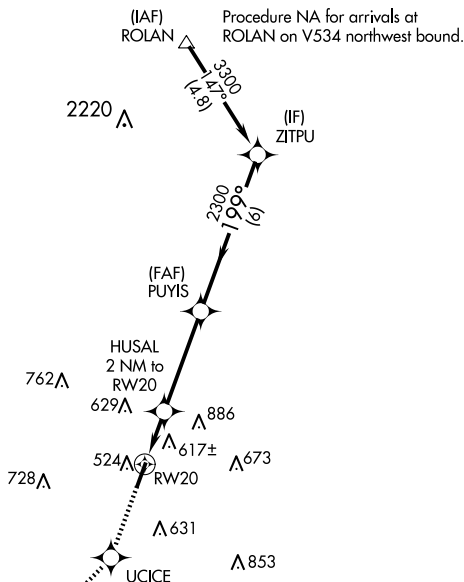
RNP APCH - GPS.



Rwy 20 helicopter visibility reduction below $\frac{3}{4}$ SM NA.
For uncompensated Baro-VNAV systems, LNAV/VNAV NA
below -15°C or above 54°C.

MISSED APPROACH: Climb to 2000 direct UCICE and track 224° to MALVE and hold.

AWOS-3 132.125	LITTLE ROCK APP CON 119.5 306.2	UNICOM 122.8 (CTAF) 0
--------------------------	---	---------------------------------




	→ 1.3 NM	0.7 NM	← 3.8 NM →	← 6 NM →		
CATEGORY	A		B		C	D
LPV DA			639-3 ⁴		251 (300-3 ⁴)	
LNAV/ VNAV DA			789-1 ⁸		401 (400-1 ⁶)	
LNAV MDA	880-1		492 (500-1)		880-1 ³ ₈ 492 (500-1 ³ ₈)	
 CIRCLING	940-1 551 (600-1)		1080-1 691 (700-1)		1200-2 ¹ ₂ 811 (900-2 ¹ ₂) 1200-2 ³ ₄ 811 (900-2 ³ ₄)	

Diagram illustrating the intersection of REIL Rwy 2 and 20 and MIRL Rwy 2-20. The diagram shows a 5002' x 100' rectangular area. A black line representing Rwy 2 runs diagonally from the bottom-left to the top-right. A grey line representing Rwy 20 runs diagonally from the top-left to the bottom-right. The intersection is marked with a circle containing the letter 'P'. An arrow points from the text '199° to RW20' to the black line. The top-left corner is labeled 'ELEV 389' and the top-right corner is labeled 'TDZE 388'.