

WAAS CH <b>58209</b> <b>W02A</b>	APP CRS <b>019°</b>	Rwy Idg TDZE <b>389</b> Apt Elev <b>389</b>
--	------------------------	---

RNAV (GPS) RWY 2

SALINE COUNTY RGNL (SUZ)

RNP APCH - GPS.

▼

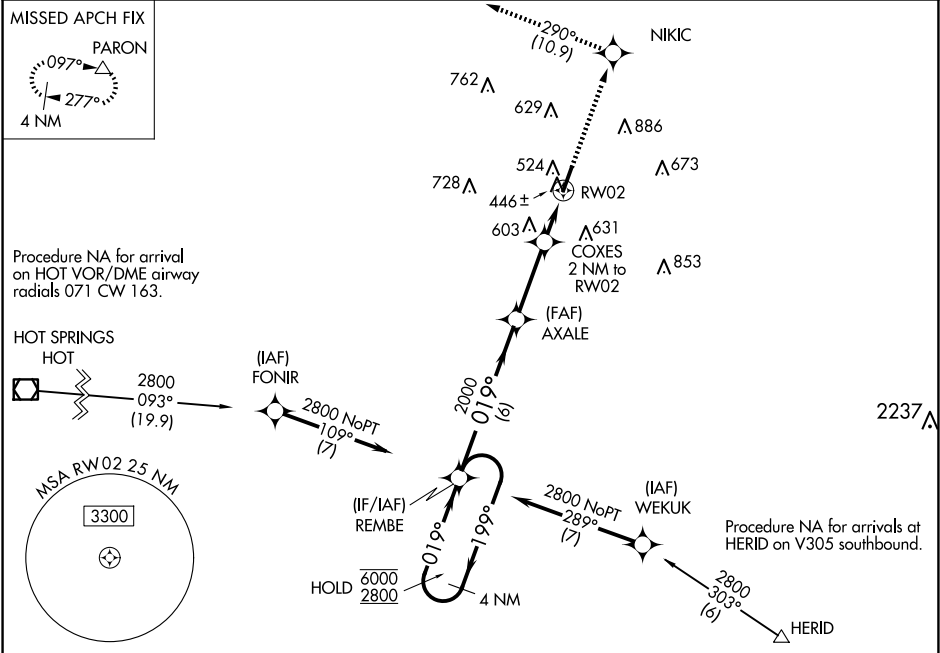
Rwy 2 helicopter visibility reduction below ¾ SM NA.

▲

For uncompensated Baro-VNAV systems, LNAV/VNAV NA below -15°C or above 54°C.

MISSED APPROACH: Climb to 2600 direct NIKIC and track 290° to PARON and hold.

AWOS-3 <b>132.125</b>	LITTLE ROCK APP CON <b>119.5 306.2</b>	UNICOM <b>122.8 (CTAF) 0</b>
--------------------------	---	---------------------------------



ELEV 389    TDZE 389

REIL Rwy 2 and 20  
MRL Rwy 2-20  
019° to RW02

VGSI and RNAV glidepath not coincident (VGSI Angle 3.00/TCH 56).

4 NM Holding Pattern

REMBE

AXALE

COXES 2 NM to RW02

RW02

6000

2800

199°

019°

019°

2000

1060

GP 3.00° TCH 45

6 NM

3 NM

0.8

1.2 NM

CATEGORY	A	B	C	D
LPV DA		639-¾	250 (300-¾)	
LNAV/VNAV DA		670-⅞	281 (300-⅞)	
LNAV MDA	820-1	431 (500-1)	820-1¼	431 (500-1¼)
CIRCLING	940-1 551 (600-1)	1080-1 691 (700-1)	1200-2½ 811 (900-2½)	1200-2¾ 811 (900-2¾)