

APP CRS
301°

Rwy Idg
TDZE
Apt Elev

N/A
N/A
2120

RNAV (GPS)-A
WEISER MUNI (S87)

RNP APCH - GPS.

▼

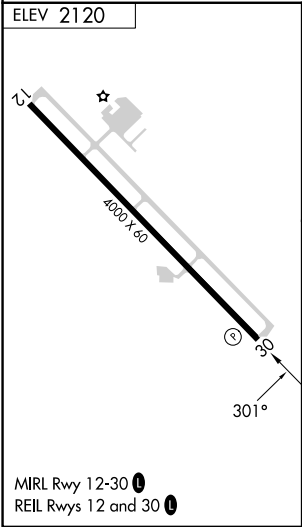
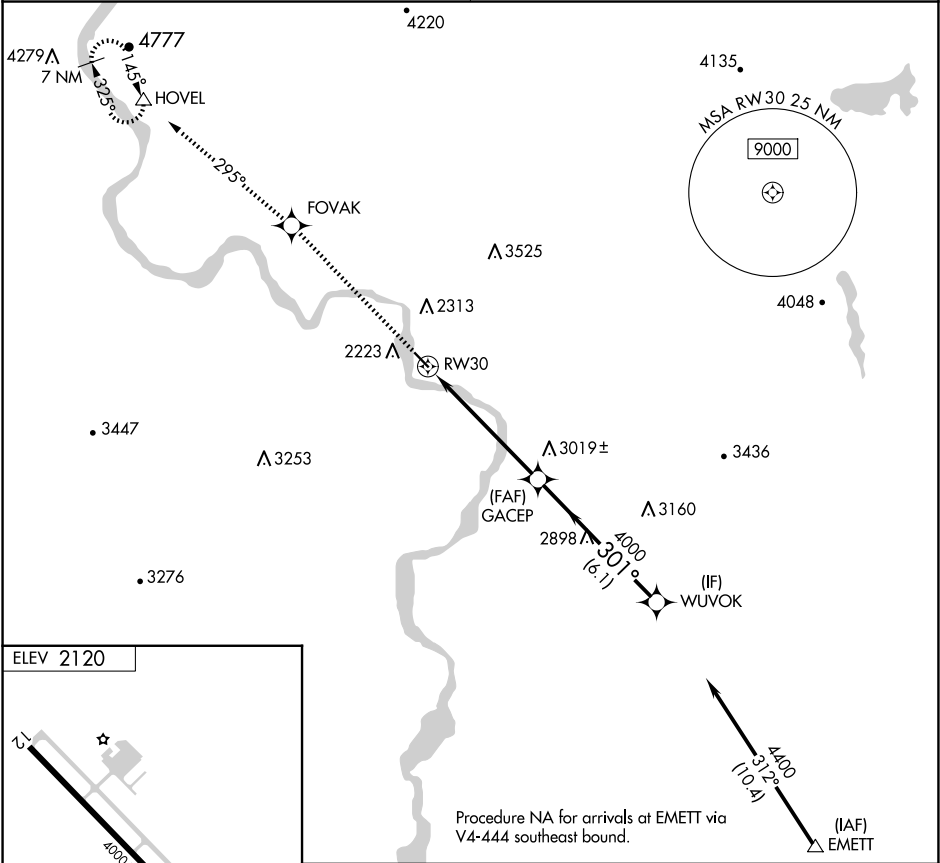
▲ NA

Procedure NA at night. Use Ontario altimeter setting; when not received, use Boise altimeter setting and increase all MDAs 160 feet.

MISSED APPROACH: Climb to 9000 direct FOVAK and via 295° track to HOVEL and hold, continue climb-in-hold to 9000.

SALT LAKE CENTER
128.05 306.95

UNICOM
122.8 (CTAF) **0**



	9000	FOVAK	295° tr	HOVEL				
					GACEP		WUVOK	
						4000	4400	
						301°		Procedure Turn NA
						5.7 NM	6.1 NM	
CATEGORY	A	B	C	D				
CIRCLING	3480-1¼ 1360 (1400-1¼)	3480-1½ 1360 (1400-1½)	3480-3 1360 (1400-3)	3620-3 1500 (1500-3)				

NW-1, 10 JUL 2025 to 07 AUG 2025

NW-1, 10 JUL 2025 to 07 AUG 2025