

WAAS CH 82225 W31A	APP CRS 298°	Rwy Ldg 3701 TDZE 60 Apt Elev 62
--	------------------------	---

RNAV (GPS) RWY 31
TATITLEK (7KA) (PAKA)

T	Use Valdez altimeter setting. Circling NA northeast of Rwy 31-13. DME/DME RNP-0.3 NA. Helicopter
A NA	visibility reduction below 1 SM NA. Procedure NA at night.

MISSED APPROACH: Climbing left turn to 4400 direct VALUC and on track 205° to BLIGH and on track 132° to JOH VOR/DME and hold.

ANCHORAGE CENTER 119.3	JUNEAU RADIO 122.2	CTAF 122.7
----------------------------------	------------------------------	----------------------

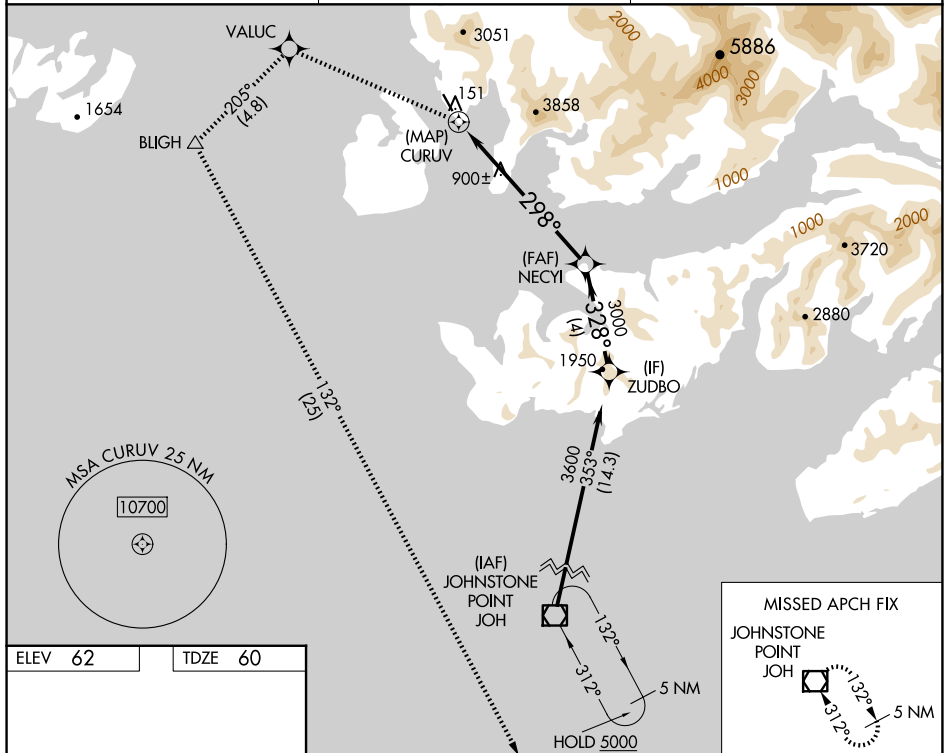


Diagram showing a flight path segment with waypoints 5, 3701 X 75, and 0.6 NM UP. The path is oriented 298°.

Diagram showing a flight path segment with waypoints CURUV, NECYI, and ZUDBO. The path is oriented 298° and 328°. The distance between CURUV and NECYI is 0.5 NM. The distance between NECYI and ZUDBO is 4 NM. The distance between CURUV and ZUDBO is 6.8 NM. The path is oriented 298° and 328°. The distance between CURUV and NECYI is 0.5 NM. The distance between NECYI and ZUDBO is 4 NM. The distance between CURUV and ZUDBO is 6.8 NM.

CATEGORY	A	B	C	D
LP MDA	1260-1¼ 1200 (1200-1¼)	1260-1½ 1200 (1200-1½)	NA	
LNAV MDA	1400-1¼ 1340 (1400-1¼)	1400-1½ 1340 (1400-1½)	NA	
CIRCLING	1400-1¼ 1338 (1400-1¼)	1400-1½ 1338 (1400-1½)	NA	