

WAAS CH 49004 W18A	APP CRS 175°	Rwy Idg 6610 TDZE 166 Apt Elev 166
----------------------------------------	------------------------	---------------------------------------------------------------

RNAV (GPS) RWY 18

HOUSTON EXEC (TME)

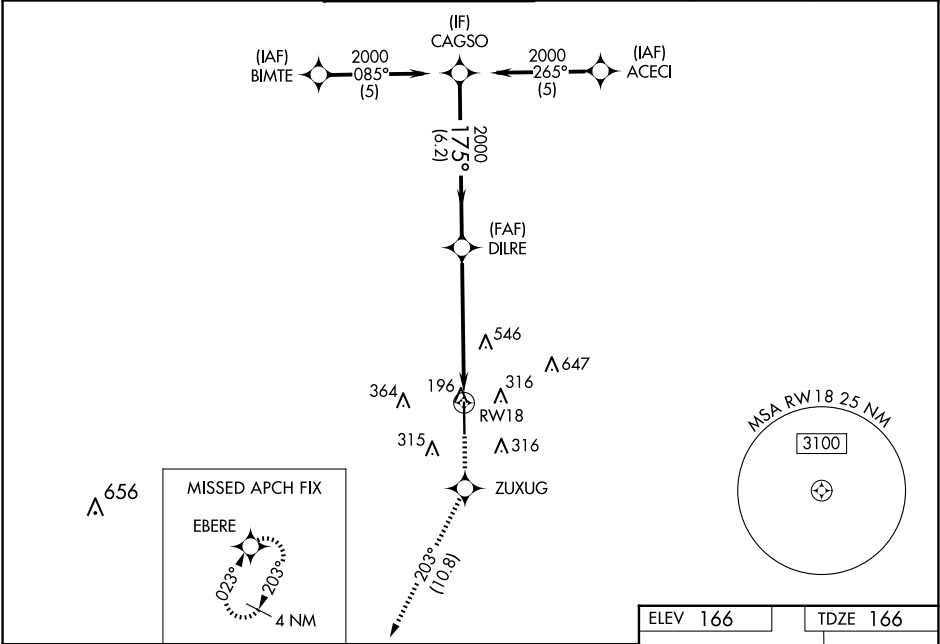
RNP APCH - GPS.

▼

Baro-VNAV NA when using David Wayne Hooks Meml altimeter setting. For uncompensated Baro-VNAV systems, LNAV/VNAV NA below -15°C or above 48°C. VDP NA when using David Wayne Hooks Meml altimeter setting. Helicopter visibility reduction below ¾ SM NA. When local altimeter setting not received, use David Wayne Hooks Meml altimeter setting and increase all DA 57 feet and all MDA 60 feet; increase LNAV/VNAV all Cats and LNAV Cat C/D visibility ¼ mile, and Circling Cat C/D visibility ¼ mile.

MISSED APPROACH:
Climb to 2000 direct ZUXUG and on track 203° to EBERE and hold.

ATIS 119.525	HOUSTON APP CON 123.8 257.7	EXECUTIVE TOWER ★ 126.975 (CTAF) 0	GND CON 132.075	CLNC DEL 132.075	UNICOM 122.975
------------------------	---------------------------------------	----------------------------------------------	---------------------------	----------------------------	--------------------------



2000

ZUXUG

tr 203°

EBERE

CAGSO

DILRE 2000

GP 3.00° TCH 40

175°

175°

1.8 NM to RW18

6.2 NM

3.7 NM

1.8

CATEGORY	A	B	C	D
LPV DA	416-1 250 (300-1)			
LNAV/VNAV DA	708-2 542 (600-2)			
LNAV MDA	780-1 614 (700-1)	780-1¾ 614 (700-1¾)		
CIRCLING	820-1 654 (700-1)	860-2 694 (700-2)	1000-2¾ 834 (900-2¾)	

REIL Rwy 18-36 0

MIRL Rwy 18-36 0

ELEV 166

TDZE 166

175°

81 4

001 X 0199

36

TWR