

SC-5, 10 JUL 2025 to 07 AUG 2025

TOP ALTITUDE:
ASSIGNED BY ATC

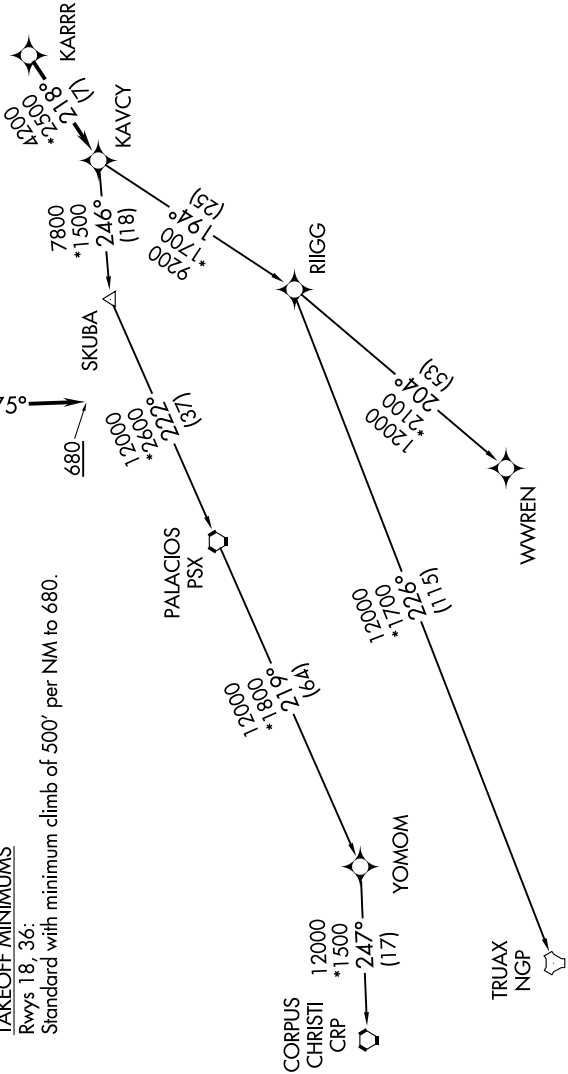
RNAV-1 DME/DME/IRU or GPS.

RADAR required.

ATIS
119.525
CLNC DEL
132.075
EXECUTIVE TOWER ★
126.975 (CTAF)
HOUSTON DEP CON
123.8 257.7

TAKEOFF MINIMUMS

Rwys 18, 36:
Standard with minimum climb of 500' per NM to 680.



(NARRATIVE ON FOLLOWING PAGE)

NOTE: Chart not to scale.

SC-5, 10 JUL 2025 to 07 AUG 2025