

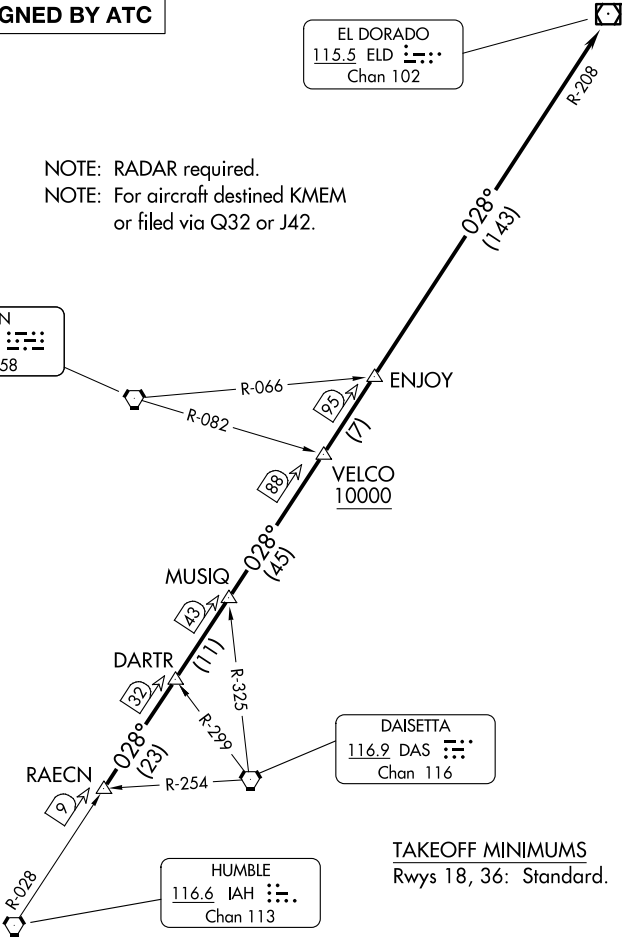
ATIS  
119.525  
CLNC DEL  
132.075  
GND CON  
132.075  
EXECUTIVE TOWER★  
126.975 (CTAF)  
HOUSTON DEP CON  
123.8 257.7

TOP ALTITUDE:  
ASSIGNED BY ATC

EL DORADO  
115.5 ELD  
Chan 102

NOTE: RADAR required.  
NOTE: For aircraft destined KMEM  
or filed via Q32 or J42.

LUFKIN  
112.1 LFK  
Chan 58



TAKEOFF MINIMUMS  
Rwys 18, 36: Standard.

NOTE: Chart not to scale.



DEPARTURE ROUTE DESCRIPTION

TAKEOFF RUNWAY 18: When entering controlled airspace, climb on assigned heading for RADAR vectors to RAECN INT. Maintain ATC assigned altitude. Expect filed altitude 10 minutes after departure, thence. . . .

TAKEOFF RUNWAY 36: Climb on heading 355° to 700 before turning. When entering controlled airspace, climb on assigned heading for RADAR vectors to RAECN INT. Maintain ATC assigned altitude. Expect filed altitude 10 minutes after departure, thence. . . .

. . . . on IAH R-028 and the ELD R-208 to ELD VOR/DME, cross VELCO INT at or above 10000.