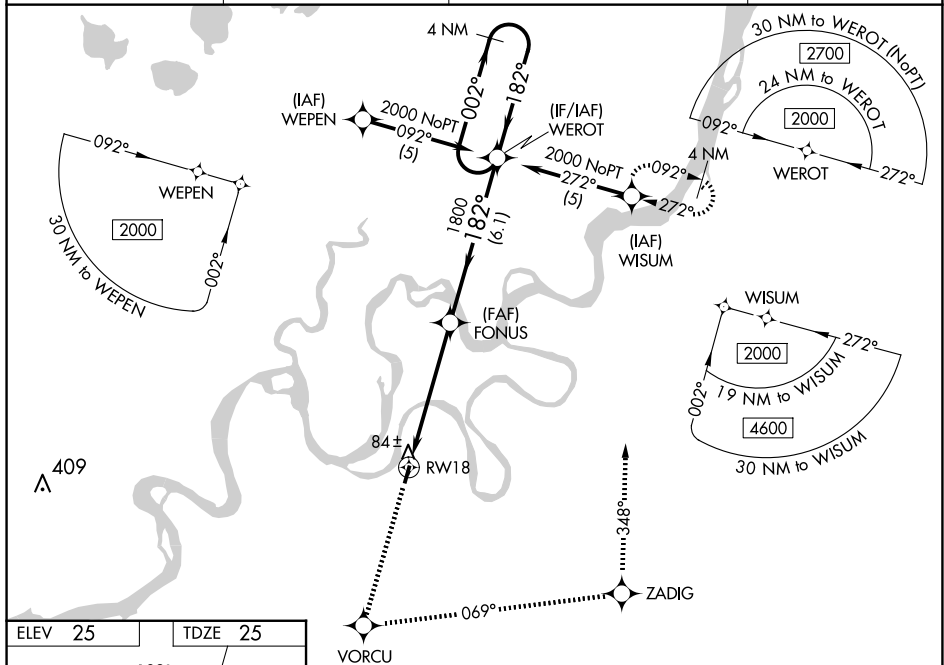


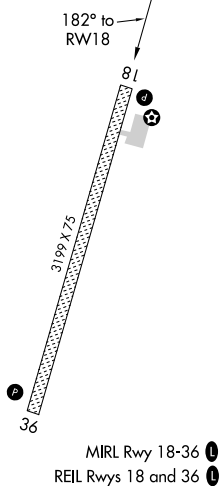
RNAV (GPS) RWY 18

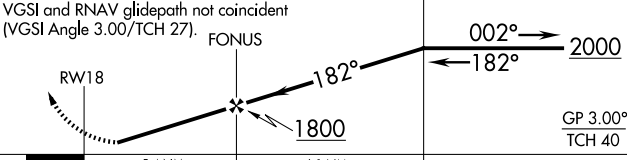
MISSED APPROACH: Climb to 2000 direct VORCU and left turn via 069° track to ZADIG and via 348° track to WISUM and hold.

AWOS-3P 120.0	BET/PABE ASOS 135.45	ANCHORAGE CENTER 125.2 372.0	CTAF 122.9 0
-------------------------	--------------------------------	--	------------------------



ELEV 25		TDZE 25
---------	--	---------



2000 ↑	VORCU ✦	069° tr	ZADIG ✦	348° tr	WISUM ✦	WEROT	4 NM Holding Pattern
VGSI and RNAV glidepath not coincident (VGSI Angle 3.00/TCH 27).							
CATEGORY		A		B		C	D
LPV	DA	316-1 291 (300-1)					
LNAV/ VNAV	DA	594-2 569 (600-2)					
LNAV MDA	620-1 595 (600-1)				620-1 ³ / ₄ 595 (600-1 ³ / ₄)		
CIRCLING	680-1 655 (700-1)				680-1 ³ / ₄ 655 (700-1 ³ / ₄)		680-2 655 (700-2)

AK. 12 JUN 2025 to 07 AUG 2025