

WAAS CH 93514 W27A	APP CRS 272°	Rwy Idg 3401 TDZE 238 Apt Elev 244
----------------------------------------	------------------------	---------------------------------------------------------------

RNAV (GPS) RWY 27

CHUATHBALUK (9A3) (PACH)

⚠

NA

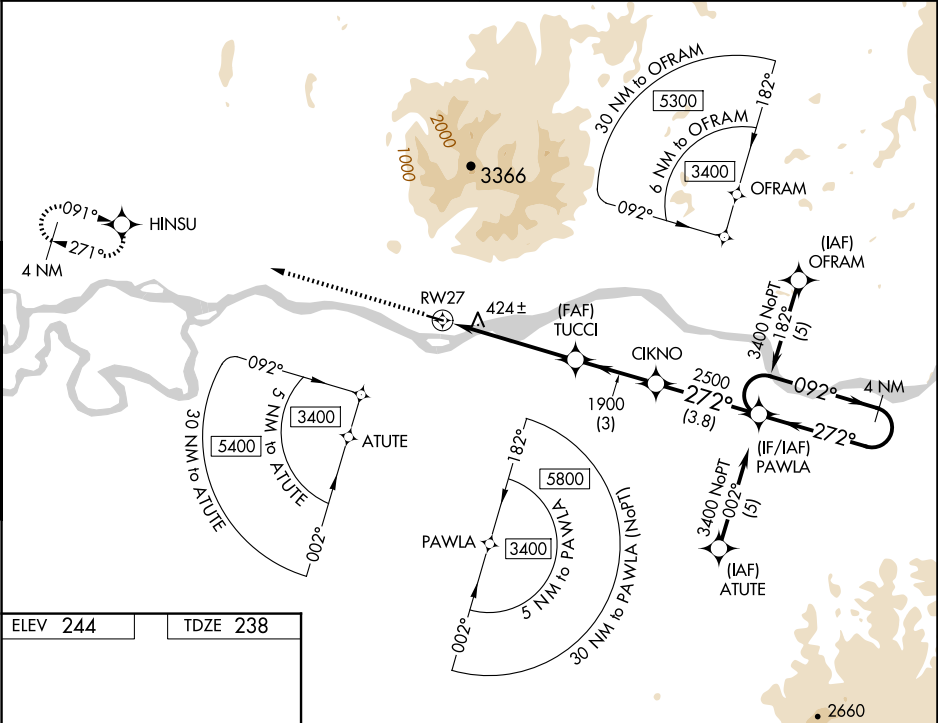
❄ -31°C

✈

Circling NA north of Rwy 9-27. DME/DME RNP-0.3 NA. Visibility reduction by helicopters NA. Use Aniak altimeter setting; when not received, use Kalskag altimeter setting and increase all DA 58 feet and MDA 60 feet and increase LNAV and Circling Cats A and C visibility ¼ mile.

MISSED APPROACH: Climb to 3200 direct HINSU and hold.

ANCHORAGE CENTER 118.15 251.05	CTAF 122.9
------------------------------------------	----------------------



ELEV 244	TDZE 238
-----------------	-----------------

3200

HINSU

VGSI and RNAV glidepath not coincident (VGSI Angle 4.00/TCH 25).

4 NM

Holding Pattern

PAWLA

CIKNO

TUCCI

RWY 27

3400

2500

1900

092°

272°

GP 3.10°

TCH 40

CATEGORY

A

B

C

D

LPV

DA

759-2 521 (600-2)

NA

LNAV

MDA

1100-1 862 (900-1)

1100-1¼ 862 (900-1¼)

1100-2½ 862 (900-2½)

NA

CIRCLING

1100-1 856 (900-1)

1100-1¼ 856 (900-1¼)

1100-2½ 856 (900-2½)

NA

MIRL Rwy 9-27
REIL Rwys 9 and 27

CHUATHBALUK, ALASKA

Orig 22OCT09

61°35'N-159°13'W

CHUATHBALUK (9A3) (PACH)

RNAV (GPS) RWY 27