

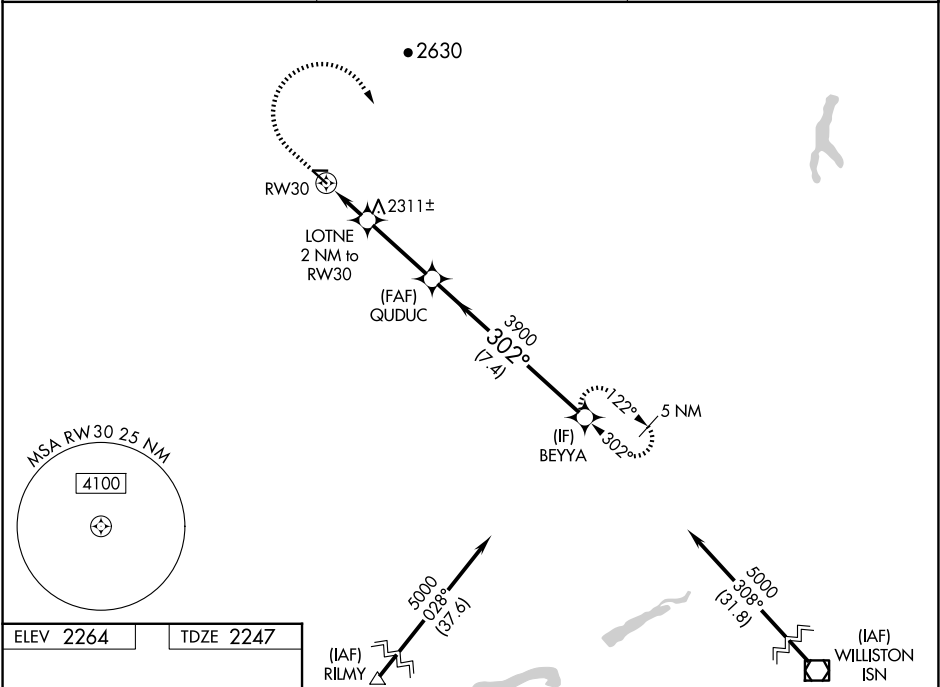
WAAS CH 50529 W30A	APP CRS 302°	Rwy Idg TDZE 2247 Apt Elev 2264	3900
--	------------------------	---	-------------

RNAV (GPS) RWY 30

SHER-WOOD (PWD)

RNP APCH-GPS.	MISSED APPROACH: Climb to 2900 then climbing right turn to 5000 direct BEYYA and hold.
---------------	--

AWOS-3PT 135.025	SALT LAKE CENTER 126.85 305.2	UNICOM 122.8 (CTAF) 0
----------------------------	---	---------------------------------



ELEV 2264	TDZE 2247	2900 5000 BEYYA			
MIRL Rwy 12-30 0		VGSi and RNAV glidepath not coincident (VGSi Angle 3.00/TCH 28).			
0.4% UP → 2951 X 60		LOTNE 2 NM to RW30			
3900 X 75		QUDUC 3900			
0.4% UP → 302°		5000			
		GP 3.00° TCH 34			
		1.3 NM 0.7 NM 3.1 NM 7.4 NM			
		RW30 2900 3900 5000			
		1.3 NM 0.7 NM			
		CATEGORY A B C D			
		LPV DA 2562-3/4 315 (300-3/4)			
		LNAV/VNAV DA 2612-1 365 (400-1)			
		LNAV MDA 2680-1 433 (500-1) 2680-1 1/4 433 (500-1 1/4)			
		CIRCLING 2780-1 516 (600-1) 2880-1 3/4 3100-2 3/4 836 (900-2 3/4)			

NW-1, 10 JUL 2025 to 07 AUG 2025

NW-1, 10 JUL 2025 to 07 AUG 2025