

WAAS CH 97729 W12A	APP CRS 122°	Rwy Idg 3900 TDZE 2252 Apt Elev 2264
--	------------------------	---

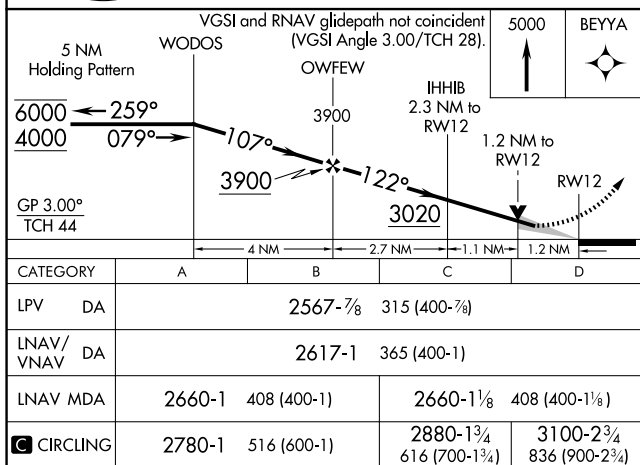
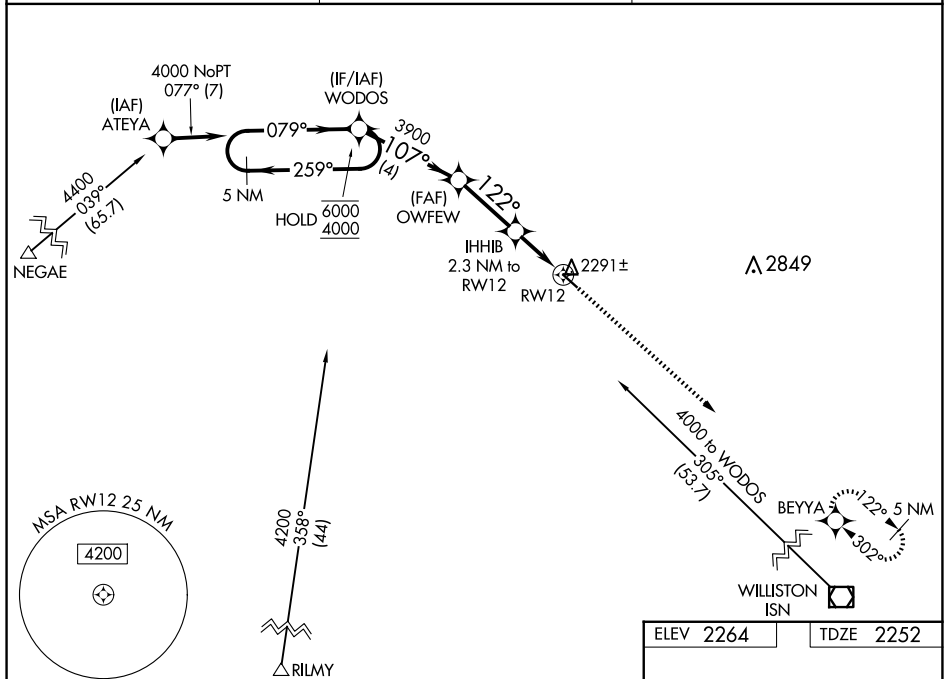
RNAV (GPS) RWY 12
SHER-WOOD (PWD)


RNP APCH-GPS.

T Circling Rwy 8, 26 NA at night. For uncompensated Baro-VNAV systems, LNAV/VNAV NA below -19°C or above 54°C. When local altimeter setting not received, use Williston altimeter setting.

MISSED APPROACH: Climb to 5000 direct BEYYA and hold.

AWOS-3PT 135.025	SALT LAKE CENTER 126.85 305.2	UNICOM 122.8 (CTAF) 0
----------------------------	---	--



CATEGORY		A	B	C	D
LPV	DA	2567-7/8 315 (400-7/8)			
LNAV/ VNAV	DA	2617-1 365 (400-1)			
LNAV	MDA	2660-1 408 (400-1)		2660-1 1/8 408 (400-1 1/8)	
 CIRCLING		2780-1 516 (600-1)		2880-1 3/4 616 (700-1 3/4)	3100-2 3/4 836 (900-2 3/4)

