

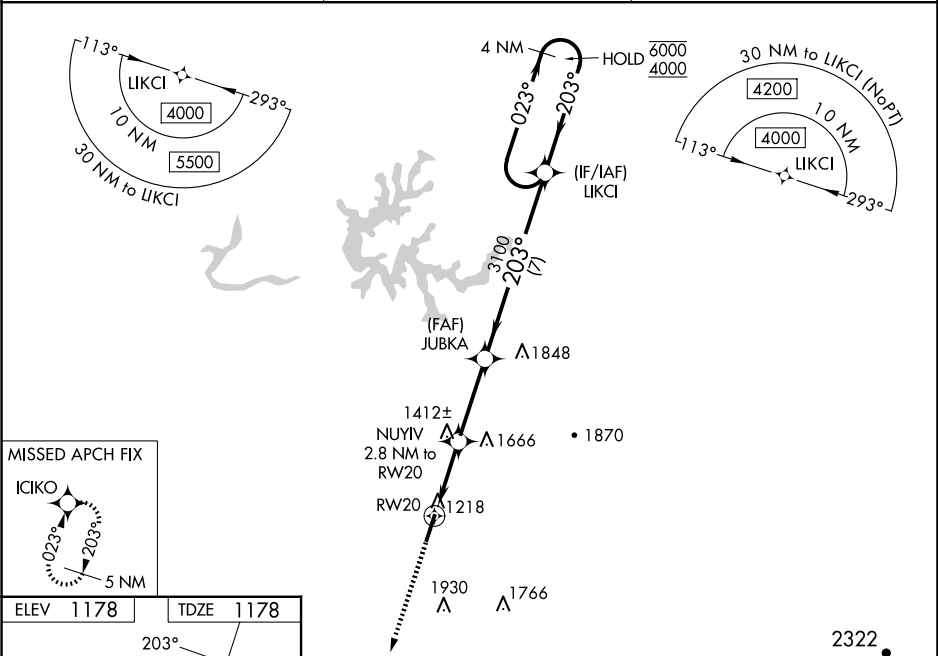
WAAS CH <b>70403</b> <b>W20A</b>	APP CRS <b>203°</b>	Rwy Ldg TDZE <b>1178</b> Apt Elev <b>1178</b>
--	------------------------	---

RNAV (GPS) RWY 20

WILLIAMSBURG-WHITLEY COUNTY (BYL)

RNP APCH.	MISSED APPROACH: Climb to 4900 direct ICIKO and hold, continue climb-in-hold 4900.
<div><div><div>▼</div><div>⚠</div><div>❄</div></div><div>Rwy 20 helicopter visibility reduction below ¾ SM NA. For uncompensated Baro-VNAV systems, LNAV/VNAV NA below -17°C or above 54°C.</div></div>	

AWOS-3 <b>119.575</b>	INDIANAPOLIS CENTER <b>124.625 371.925</b>	UNICOM <b>122.7 (CTAF) 0</b>
--------------------------	---	---------------------------------



ELEV 1178	TDZE 1178
203°	20
349° x 100	0.4% UP
2	MIRL Rwy 2-20 0
REIL Rws 2 and 20 0	
4900 ICIKO	VGSI and RNAV glidepath not coincident (VGSI Angle 3.17/TCH 30).
*LNAV only.	JUBKA 3100
NUYV 2.8 NM to RW20	LIKCI Holding Pattern
*1.4 NM to RW20	023° → 6000
RW20	← 203° 4000
2100*	GP 3.00° TCH 45
1.4 1.4 3.1 NM 7 NM	
CATEGORY	A B C D
LPV DA	1651-1⅜ 473 (500-1⅜)
LNAV/VNAV DA	1670-1⅝ 492 (500-1⅝)
LNAV MDA	1680-1 502 (600-1) 1680-1⅝ 502 (600-1⅝)
CIRCLING	1760-1 582 (600-1) 1860-1 682 (700-1) 2240-3 1062 (1100-3) 2260-3 1082 (1100-3)