

WAAS CH <b>53312</b> <b>W02A</b>	APP CRS <b>023°</b>	Rwy Ldg TDZE <b>1168</b> Apt Elev <b>1178</b>
--	------------------------	---

RNAV (GPS) RWY 2

WILLIAMSBURG-WHITLEY COUNTY (BYL)

⚠

NA

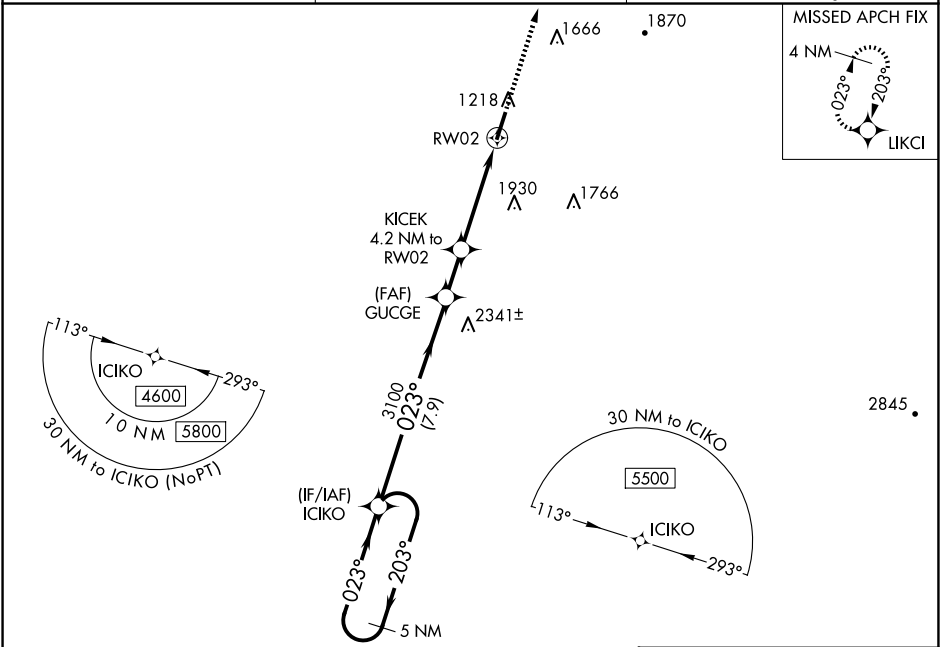
⚠

-16°C

When local altimeter setting not received, use London altimeter setting and increase DA 48 feet, MDA 60 feet and LPV all Cats visibility 1/8 mile. DME/DME RNP-0.3 NA. Visibility reduction by helicopters NA. VDP NA with London altimeter setting.

MISSED APPROACH:  
Climb to 4000 direct  
LIKCI and hold.

AWOS-3 <b>119.575</b>	INDIANAPOLIS CENTER <b>124.625 371.925</b>	UNICOM <b>122.7 (CTAF) 0</b>
--------------------------	---	---------------------------------



ELEV 1178      TDZE 1168

5 NM Holding Pattern

ICIKO

4600

GP 3.00° TCH 35

GUCGE

3100

\*2520

KICEK

4.2 NM to RW02

\*3.3 NM to RW02

RW02

1178

3057

4000

LIKCI

\* LNAV only.

CATEGORY	A	B	C	D
LPV DA	1418 7/8 250 (300-7/8)			
LNAV MDA	2300-1 1/4 1132 (1200-1 1/4)	2300-1 1/2 1132 (1200-1 1/2)	2300-3	1132 (1200-3)
CIRCLING	2300-1 1/4 1122 (1200-1 1/4)	2300-1 1/2 1122 (1200-1 1/2)	2300-3	1122 (1200-3)

0.48% UP

5499 X 100

20

023°

MIRL Rwy 2-20 0

REIL Rws 2 and 20 0

SE-1, 10 JUL 2025 to 07 AUG 2025

SE-1, 10 JUL 2025 to 07 AUG 2025